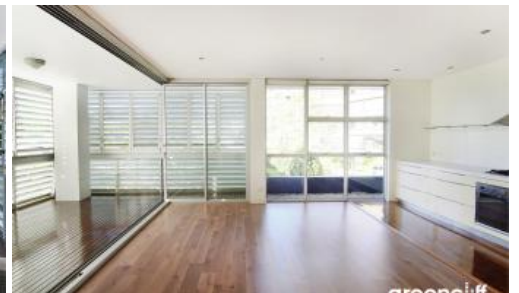


Leased



Camperdown



"AQUILON" NORTH FACING TWO BEDROOM APARTMENT!

INSPECTION CANCELLED

Perfectly positioned within sought after "Aquilon" is this lovely north facing two bedroom apartment.

Features include:

- Ultra modern open plan kitchen, spacious living area with new wood flooring to living spaces and updated LED lighting
- Spacious timber decked loggia , ideal for alfresco dining
- Generous bedrooms, both with built-in wardrobes
- Two sleek bathrooms, en-suite off master bedroom
- Light and airy throughout, internal laundry facilities
- Security building with lift and security car space
- Pets not allowed

Set in the popular City Quarter complex, boasting access to your choice of 50 metre outdoor or 25m indoor pool and two gymnasiums.

The complex also has 24 hour security, Japanese restaurant, cafés and a convenience store. All within ten minutes from Glebe, Broadway, Leichhardt, Sydney University and the CBD.

For more information, please contact Nicole Guibani- 0435 127 552

**Please note, images shown are indicative only.

 2  2  1

Price

L1/4 Alexandra Dr | DEPOSIT
TAKEN

**Property
Type**

Rental

**Property
ID**

3690

Agent Details

Michelle Kilala - 0419 777 239
michelle@greenciff.com.au

Office Details

Greenciff Camperdown Office
Shop 1 1 Sterling Cct Camperdown NSW
2050 Australia
02 8262 8262

greenciff
Inner city specialists