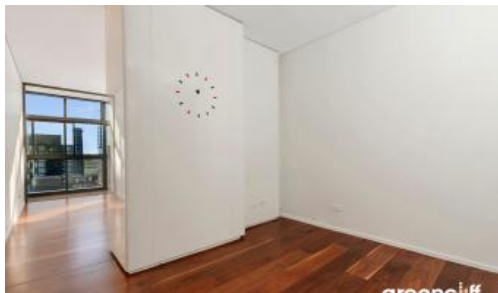


Sold

1201, 8 Park Lane, Chippendale



PERFECT OPPORTUNITY FOR FIRST HOME OWNERS & INVESTORS

Your chance to own a sleek stylish and perfectly positioned one bedroom suite in the Central Park development.

Situated on the 12th floor of 8 Park Lane looking out towards the park this beautifully designed property offers a perfect opportunity for the astute investor or the first home buyer.

Lifestyle and convenience is on your doorstep with an array of entertaining, dining and shopping options for you to choose from. Situated minutes from Central Station, China Town, UTS, Broadway shopping centre, and the City centre, you are totally connected to the heart of the city.

Features include:

- Airconditioning
- built in wardrobes
- 24 hour concierge
- Gymnasium
- Swimming pool
- Spa
- Roof top BBQ area

For further information on this suite apartment, please get in touch with Emlyn Walters on 0405 606 025

The above information provided has been furnished to us by the vendor/s. We have not verified whether or not that information is accurate and do not have any belief in one way or the other in its accuracy. We do not accept any responsibility to any person for its accuracy and do no more than pass it on. All interested parties should make and rely upon their own inquiries in order to determine whether or not this information is in fact accurate.

🛏 1 🚿 1

Price

SOLD

Property Type

Residential

Property ID

3680

Agent Details

Emlyn Walters - 0405 606 025

emlyn@greenciff.com.au

William Chen - 0430 026 436

william@greenciff.com.au

Office Details

Greenciff Camperdown Office

Shop 1 1 Sterling Cct Camperdown NSW

2050 Australia

02 8262 8262

greenciff
Inner city specialists