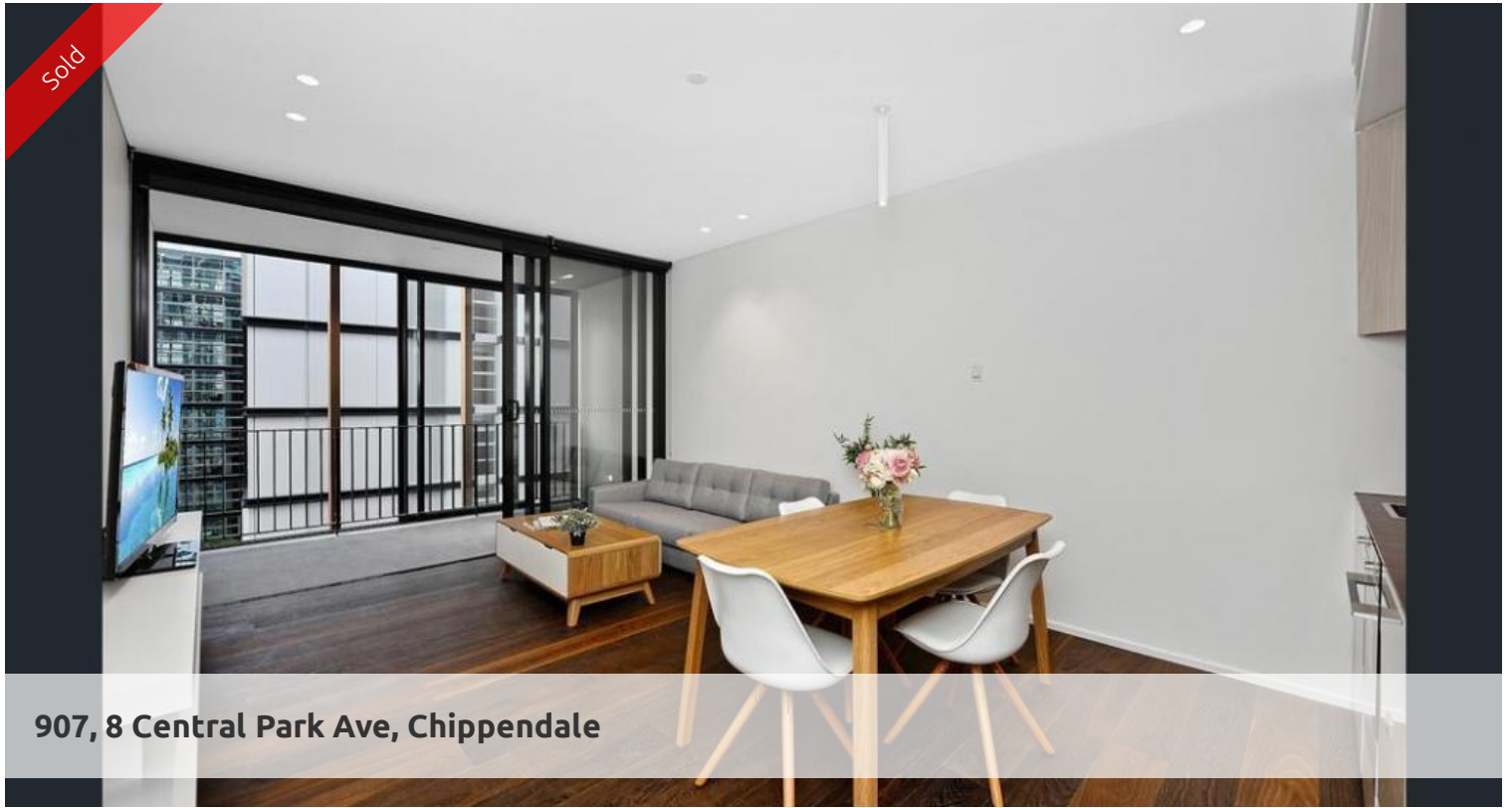


Sold



907, 8 Central Park Ave, Chippendale



MASSIVE NORTH FACING 1 BEDROOM SUITE

Massive one bedroom suite for sale, perfect for any owner occupiers or investors. Apartment 907 is located on the 9th floor of near new Connor building.

This one bedroom plus study nook apartment is 58sqm in size complete with quality finishes throughout. Facing North with an abundance of sunlight, this apartment has ducted air-conditioning and has walnut colored timber flooring throughout. The kitchen cabinetry has a built-in refrigerator, microwave and dishwasher.

Other features of this suite include:

- combined washing machine and dryer
- built-in wardrobes in bedroom
- roller blinds
- study nook
- basement storage
- security alarm

The Connor building is pet friendly and has concierge services. Residents of building also enjoy access to cardio room, lounge area and a rooftop garden with beautiful views of Chippendale Green Park.

Located on the corner of O'Connor Street and Central Park Avenue, it gives easy access to bus and train services. Less than 5 minutes walk away to the Central Train station, Central Park Mall on Broadway and UTS.

Please call Danny Yeung of Greencliff Realty to arrange an inspection to view this fantastic property on 0451 836 388

Disclaimer- Photos used are for indicative purposes only

🛏 1 🚿 1

Price

SOLD

Property Type

Residential

Property ID

3613

Agent Details

Danny Yeung - 0451 836 388

danny@greencliff.com.au

William Chen - 0430 026 436

william@greencliff.com.au

Office Details

Greencliff Central Park Office

101/5 Carlton Street Chippendale NSW

2008 Australia

02 9199 6555

greenc  **ff**
Inner city specialists