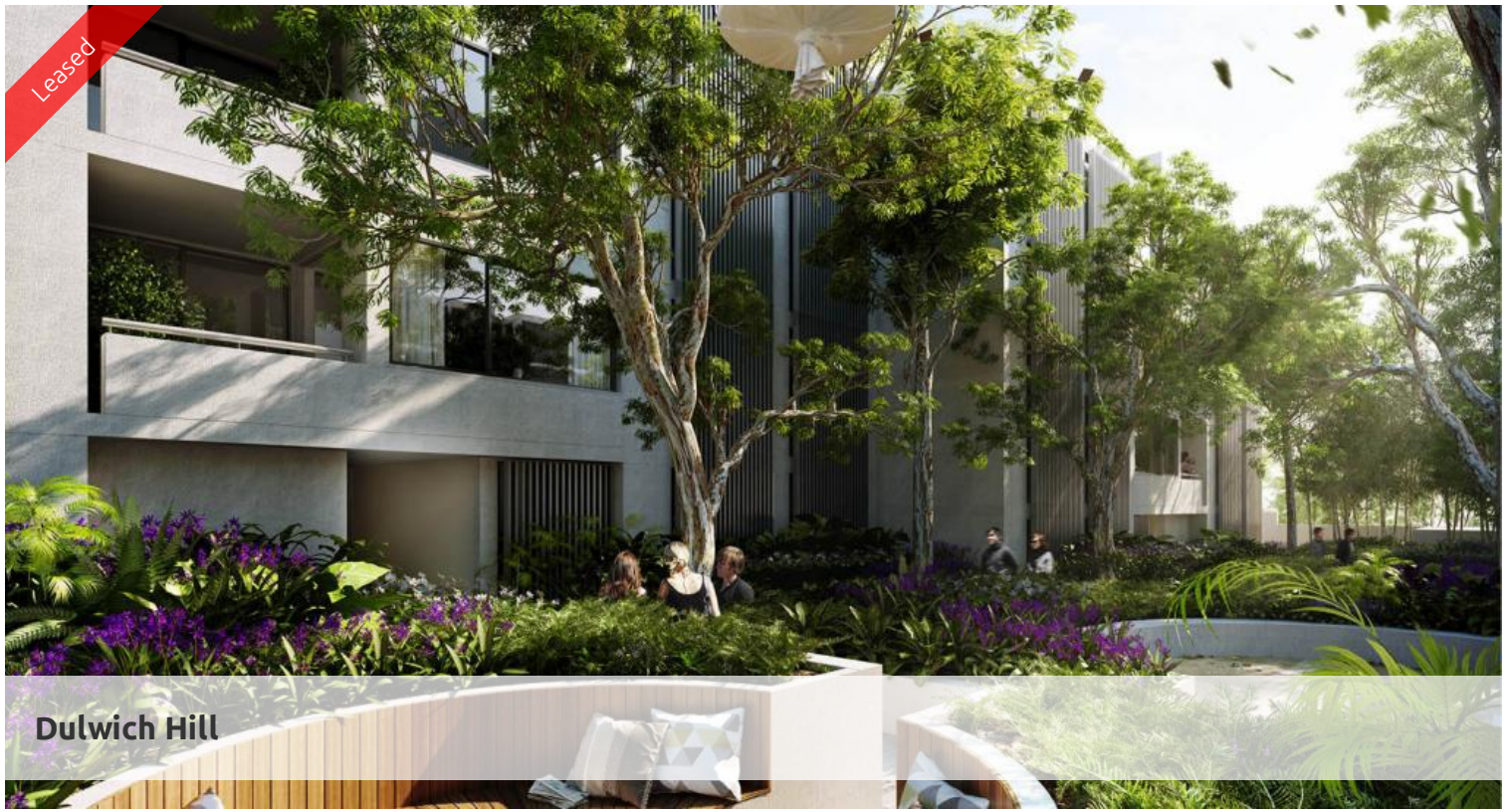


Leased



Dulwich Hill



Brand new - larger style 1 bedroom apartment

Live the life you deserve with the one of the best new developments in the Inner West.

Features of this apartment include:

- Spacious combined lounge and dining area leading to a sunny North facing balcony
- Designer kitchen with stainless steel appliances and gas cooking
- Double sized bedroom
- Ducted air conditioning including ceiling fans to bedrooms
- Timber floors throughout
- Highest quality finishes
- Internal laundry with dryer
- Basement storage
- Located at the back of the block away from New Canterbury Road for peace and quiet

The development includes a communal garden area.

All within short walking distance to Hurlstone Park Rail (8 minutes), Dulwich Grove light rail, local cafes and schools makes this the perfect address to call home.

For further information or to make a time to inspect this apartment, please contact Eugene Ganke on 0404 010 555. We are based onsite, walk ins welcome.

++ Note photos used might be indicatives only

The above information provided has been furnished to us by the vendor/s. We have not verified whether or not that information is accurate and do not have any belief in one way or the other in its accuracy. We do not accept any responsibility to any person for its accuracy and do no more than pass it on. All interested parties should make and rely upon their own inquiries in order to determine whether or not this information is in fact accurate.

 1  1  1

Price 803 New Canterbury Rd |
DEPOSIT TAKEN

Property Type Rental

Property ID 3372

Agent Details

William Chen - 0430 026 436

william@greenciff.com.au

Michelle Kilala - 0419 777 239

michelle@greenciff.com.au

Office Details

Greenciff Camperdown Office
Shop 1 1 Sterling Cct Camperdown NSW
2050 Australia
02 8262 8262

greenciff
Inner city specialists