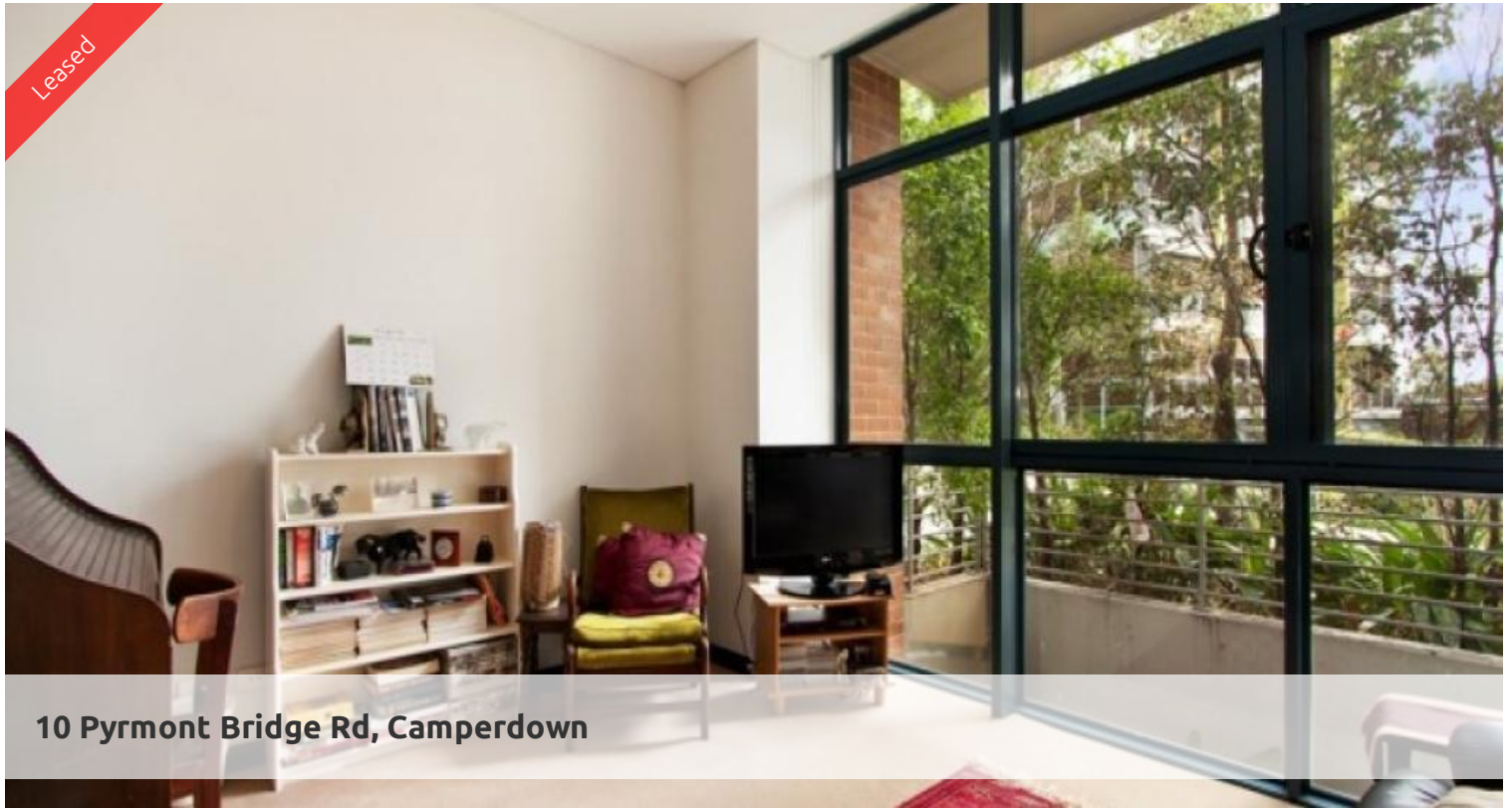


Leased



10 Pyrmont Bridge Rd, Camperdown



ETAGE ONE BEDROOM APARTMENT

Beautiful one bedroom apartment situated in the popular "Etage" building within the sought after City Quarter complex. Features include;

- Galley style kitchen with gas cook top, dishwasher and pull-out pantry
- Combined open plan living area, light and airy throughout
- Ensuite bathroom and internal laundry including clothes dryer
- Separate raised bedroom with built-in wardrobes
- North facing bright and airy position with floor to ceiling windows.
- Moments from shops, cafes, transport, Sydney University and RPAH

Conveniently located in The City Quarter Complex you will be able to enjoy the free, unlimited access to your choice of two pools and gyms. Complex also boasts 24hr security, a Japanese restaurant, cafes and convenience store.

For more information please call Ugo Awujo on 0469 652 801

images used maybe indicatives

The above information provided has been furnished to us by the vendor/s. We have not verified whether or not that information is accurate and do not have any belief in one way or the other in its accuracy. We do not accept any responsibility to any person for its accuracy and do no more than pass it on. All interested parties should make and rely upon their own inquiries in order to determine whether or not this information is in fact accurate.

🛏 1 🚿 1

Price

10 Pyrmont Bridge Road |
\$500 PW

Property Type

Rental

Property ID3109

Agent Details

Michelle Kilala - 0419 777 239

michelle@greenciff.com.au

Tammy (Rungnapa) Kanittanon - 0431

511 907 tammy@greenciff.com.au

Office Details

Greenciff Camperdown Office

Shop 1 1 Sterling Cct Camperdown NSW

2050 Australia

02 8262 8262

greenciff
Inner city specialists