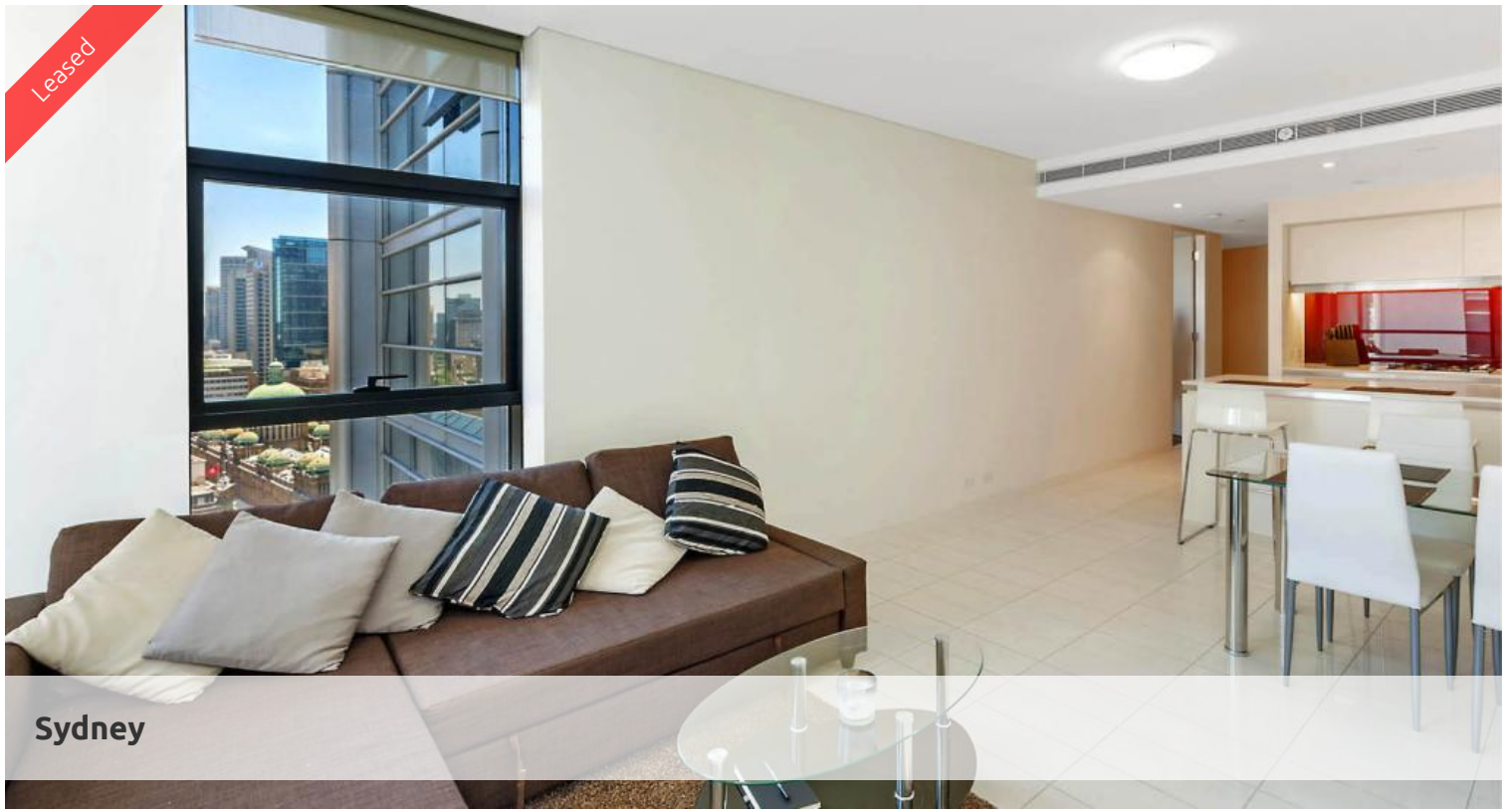


Leased



Sydney



DEPOSIT TAKEN-FABULOUS CITY LIVING AT ITS BEST!

It is the one you have been waiting for - a one bedroom unfurnished apartment in Lumiere Residences Sydney!

Situated on level 31, this apartment is positioned on the west side of the building and offers the beauty of a north window in the living area that captures a partial view over the heritage precinct.

Occupants of this apartment enjoy natural sunlight all year round with floor to ceiling glass windows in the living room and bedroom.

The accommodation comprises of one queen size bedroom with carpeted floor, reverse-cycle air conditioning and a built-in wardrobe. The designer kitchen offers eat-in ability, stainless steel gas appliances, dishwasher and a full sized built in fridge. The bathroom features high quality finishes throughout and an internal laundry with plenty of room for storage.

The Lumiere Residences features 2 levels of private residential facilities including a 50 metre swimming pool spanning indoor to outdoor, a comprehensive first class gym, yoga/games room, 2 cinemas, meeting area and 24 hour concierge/security.

Living in Lumiere is all about giving residents the distinct advantage of convenience, such as finding something to do as close as "downstairs" in Regent's Place own restaurants, or the city's cinema precinct.

 1  1

Price

L31/101 Bathurst St | \$750
PW

Property Type

Rental

Property ID 3098

Agent Details

Lieu Mai - 0415 797 525
lieu@greenciff.com.au

Office Details

Greenciff Sydney Kent St
Level 10/488 Kent Street Sydney NSW
2000 Australia
02 8823 8818

greenciff
Inner city specialists

The above information provided has been furnished to us by the vendor/s. We have not verified whether or not that information is accurate and do not have any belief in one way or the other in its accuracy. We do not accept any responsibility to any person for its accuracy and do no more than pass it on. All interested parties should make and rely upon their own inquiries in order to determine