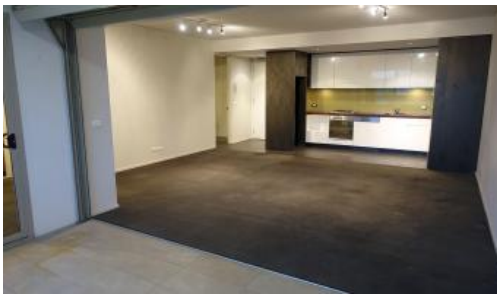


Leased



## Camperdown



Vie - 1 bedroom plus parking

**Please meet at our office 1/1 Sterling Circuit, Camperdown 10 minutes before the inspection to register**

Contemporary and distinctive urban designed low-rise apartment buildings encircle the landscaped chill-out gardens. Located in Camperdown, one of Sydney's most eclectic lifestyle hubs and right on the city fringe, you get the best of both worlds.

City Quarter is a growing community located in the heart of Camperdown, alongside all of Sydney's big city attractions.





A short 10 minutes bus ride to Sydney CBD, with major universities, RPA Hospital, Broadway Shopping Centre, Annandale shopping village and transport all within walking distance.

Apartment features: -

- Ultra modern open plan kitchen with dishwasher, gas cooktop and fridge
- Spacious combined lounge/dining area flowing to huge timber decked loggia
- Generous bedroom with walk through built-in wardrobes and loggia access
- Dual access bathroom with separate bath and shower and sleek finishes
- Concealed internal laundry facilities with washing machine and dryer
- Security building with undercover security car space
- Boasts a superb flow of indoor outdoor living ideal for alfresco entert

Enjoy unlimited access to your choice of a 50 metre outdoor or 25m indoor pool and two gymnasiums. The complex also has 24 hour security, a Japanese restaurant, cafes & convenience store.

For more information or arrange for private viewing, please contact Raymond Waiava

 1  1  1 

**Price**

DEPOSIT TAKEN | \$640  
PW

**Property Type**

Rental

**Property ID**

233

**Land Area**

0 m2

**Floor Area**

8 m2

**Agent Details**

Michelle Kilala - 0419 777 239  
michelle@greenciff.com.au

**Office Details**

Greencliff Camperdown Office  
Shop 1 1 Sterling Cct Camperdown NSW  
2050 Australia  
02 8262 8262

**greenciff**  
Inner city specialists