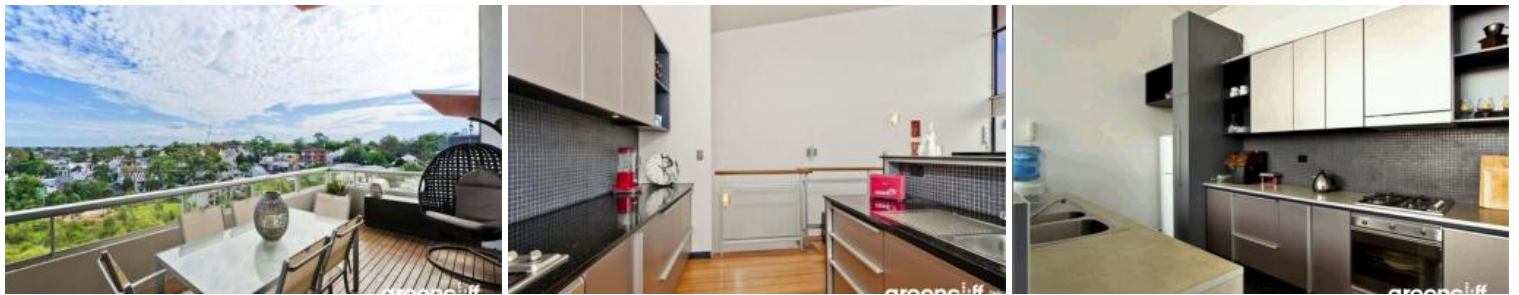




**Camperdown**



## "ETAGE" TWO BEDROOM APARTMENT WITH CAR SPACE

Spacious North Facing two storey, two bedroom apartment perfectly positioned on the top floor of "Etage" within the sought after City Quarter complex. Offering a relaxed inner city lifestyle, features include:

- Gourmet kitchen boasting gas cook top, dishwasher and breakfast bar
- Open plan living flows seamlessly to sundrenched timber decked loggia
- Generous bedrooms, both with built-in wardrobes, main with ensuite
- Two sleek bathrooms (one ensuite), internal laundry with dryer
- Air conditioning in lounge
- Northerly aspect providing an abundance of natural light
- Superb flow of indoor/outdoor living, ideal for alfresco entertaining
- Lovely district views toward City and Anzac Bridge, air conditioned
- Security building with lift and under cover security car space

Conveniently located in The City Quarter Complex you will be able to enjoy the free, unlimited access to your choice of two pools and gyms. Complex also boasts 24hr security, a Japanese restaurant, cafes and convenience store.

Please call Nicole 0435 127 552 or 8262 8262

\*\* Photos used are indicatives only \*\*

The above information provided has been furnished to us by the vendor/s. We have not verified whether or not that information is accurate and do not have any belief in one way or the other in its accuracy. We do not accept any responsibility to any person for its accuracy and do no more than pass it on. All interested parties should make and rely upon their own inquiries in order to determine whether or not this information is in fact accurate.

2 2 1

**Price** 69 10 Pymont Bridge Road |  
DEPOSIT TAKEN

**Property Type** Rental

**Property ID** 2220

### Agent Details

Michelle Kilala - 0419 777 239  
michelle@greenciff.com.au

### Office Details

Greenciff Camperdown Office  
Shop 1 1 Sterling Cct Camperdown NSW  
2050 Australia  
02 8262 8262

**greenciff**  
Inner city specialists