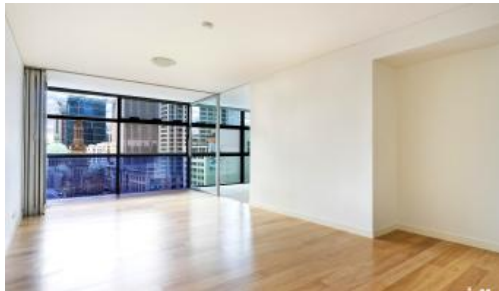


Leased

greenciff
Inner city specialists

Sydney



Lumiere Residence: Stunning 2 Bed CONTACT AGENT

Stunning two bedroom apartment available in the sought after Lumiere Residences.

Features of this wonderful apartment include:

- Spacious open plan kitchen/lounge room
- Modern kitchen with gas cooking and stainless steel appliances
- 2 double sized bedrooms both with built-ins, main with ensuite
- Separate study area/extra internal storage space
- Ducted air conditioning throughout
- Secure parking space
- Timber decking loggia overlooking Town Hall and the QVB

Full access to Club Lumiere and building facilities:

- Spectacular indoor/outdoor 50 & 20 metre pool
- Sauna
- Spa
- Gym
- Function Rom
- 2 cinemas
- 24hrs concierge and security.

For further information or to inspect, please call Jody Zhang 0404 586 699 or 8823 8818

*Photographs used may be indicative.

The above information provided has been furnished to us by the vendor/s. We have not verified whether or not that information is accurate and do not have any belief in one way or the other in its accuracy. We do not accept any responsibility to any person for its accuracy and do no more than pass it on. All interested parties should make and rely upon their own inquiries in order to determine whether or not this information is in fact accurate.

🛏 2 📶 2 🚗 1

Price	\$1,350
Property Type	Rental
Property ID	2128

Agent Details

Lieu Mai - 0415 797 525
lieu@greenciff.com.au

Office Details

Greenciff Sydney Kent St
Level 10/488 Kent Street Sydney NSW
2000 Australia
02 8823 8818

greenciff
Inner city specialists