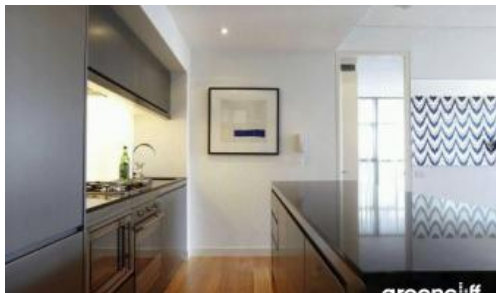


Leased



Sydney



## Gorgeous Darling Harbour View

Luxurious three bedroom apartment on level 38 and a unique opportunity to reside in this sought after designer apartment with sweeping & panoramic views over Darling Harbour, Sydney Harbour.

Large main bedroom with exceptional cupboard space & ensuite, second and third bedrooms with built-in wardrobes, timber flooring throughout, reverse cycle air-conditioning, separate study area, large loggia entertaining area, combined lounge and dining areas spanning over one large room.

Gourmet kitchen with top quality Miele appliances, large internal laundry, ample cupboard space, 1 x security car space large enough to fit 2 small cars

The Lumiere features:

- 24 hour security and concierge
- 2 private cinemas
- 50 meter swimming pool
- Spa, sauna and steam room
- Meeting areas

The above information provided has been furnished to us by the vendor/s. We have not verified whether or not that information is accurate and do not have any belief in one way or the other in its accuracy. We do not accept any responsibility to any person for its accuracy and do no more than pass it on. All interested parties should make and rely upon their own inquiries in order to determine whether or not this information is in fact accurate.

🛏 3 🗺 2 🚗 1

**Price**

L38/101 Bathurst St | \$1750  
PW

**Property  
Type**

Rental

**Property ID** 2102

### Agent Details

Lieu Mai - 0415 797 525  
lieu@greenciff.com.au

### Office Details

Greenciff Sydney Kent St  
Level 10/488 Kent Street Sydney NSW  
2000 Australia  
02 8823 8818

**greenciff**  
Inner city specialists