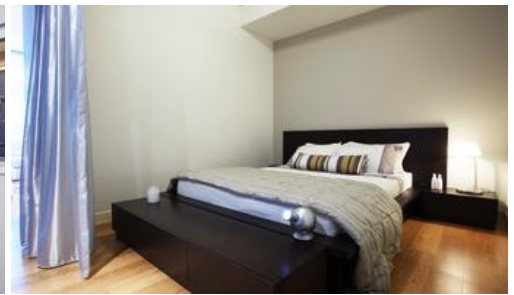




2314 101 Bathurst St, Sydney



SMART STUDIO SUITE IN THE CENTER OF SYDNEY CBD

Positioned on the 23rd floor of the world famous Lumiere Residences Sydney is this immaculate studio suite. At approximately 45sqm in size, this apartment is perfect for the first home buyer or astute investor.

The apartment accommodates a queen size bedroom with reverse cycle air-conditioning and a built-in wardrobe with plenty of storage. The designer kitchen offers eat-in ability, stainless steel gas appliances, dishwasher and a full sized built in fridge. The bathroom features high quality finishes throughout and there is a separate internal laundry.

A very secure building with 24 hour concierge and intercom entry.

Residents of Lumiere Sydney have access to the Club Lumiere:

- 50 metre swimming pool with spa, sauna and a steam room
- World class gymnasium
- 2 theatrettes
- Meeting rooms
- Function rooms
- 24 hour concierge and security

1 1

Price
Property Type
Property ID

SOLD for \$738,000
residential
1955

Agent Details

Danny Yeung (Hei Yeung) - 0451 836
388 danny@greenciff.com.au

Office Details

Greenciff Sydney Kent St
Level 10/488 Kent Street Sydney NSW
2000 Australia
02 8823 8818

greenciff
Inner city specialists

The above information provided has been furnished to us by the vendor/s. We have not verified whether or not that information is accurate and do not have any belief in one way or the other in its accuracy. We do not accept any responsibility to any person for its accuracy and do no more than pass it on. All interested parties should make and rely upon their own inquiries in order to determine whether or not this information is in fact accurate.