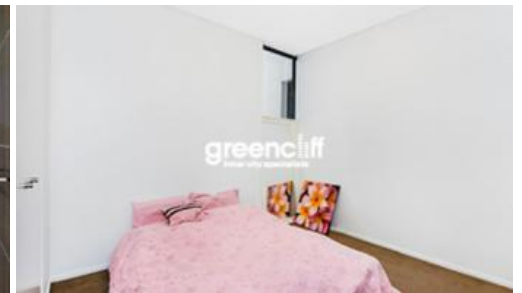


Sold



1008, 18 Park Lane, Chippendale



Central Park, the epitome of the future urban village.

Apartment 1008 is perfect for those looking for an apartment in city location. Less than 1.5km to Sydney Town Hall, the University of Sydney and a 3 minute walk to UTS, Central Station and the central bus interchange.

The newly completed and brilliantly designed one bedroom one bathroom apartment features tiled flooring, spectacular floor to ceiling glass windows with park and city views. The floor plan utilizes space for maximum functionality and privacy.

Additional storage is included in the basement level – perfect for a bicycle or two.

Please contact Nicola Ericson on 0410 433 445 or Michael Lo on 0401 973 703 for further information.

The above information provided has been furnished to us by the vendor/s. We have not verified whether or not that information is accurate and do not have any belief in one way or the other in its accuracy. We do not accept any responsibility to any person for its accuracy and do no more than pass it on. All interested parties should make and rely upon their own inquiries in order to determine whether or not this information is in fact accurate.

🛏 1 📶 1

<b>Price</b>	SOLD
<b>Property Type</b>	Residential
<b>Property ID</b>	1914

#### Agent Details

William Chen - 0430 026 436  
william@greenciff.com.au

#### Office Details

Greenciff Central Park Office  
101/5 Carlton Street Chippendale NSW  
2008 Australia  
02 9199 6555

**greenciff**  
Inner city specialists