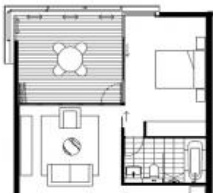




C704, 3 Sterling Circuit, Camperdown



IMPRESSIVE STYLISH APARTMENT WITH CITY VIEWS- RARE OFFERING

This stylish and contemporary seventh floor apartment has been expertly crafted to create a peaceful haven of comfort and absolute convenience. Boasting exquisite city views, this East facing apartment is enhanced by a wide array of resort style features and easy access to all amenities. Spacious living area superbly flowing to generous loggia allows for the perfect entertaining area.

- Spacious bedroom with built-in robes and lovely outlook
- Open plan living, separate study nook, chic stone and Smeg galley kitchen
- A wall of bi-folds retract for access to the loggia
- Superb finishes throughout, internal laundry, reverse cycle air conditioning
- Perfectly designed for private indoor and outdoor living
- Security entry plus storage cage, easy access to the pool and gym
- Set amongst superb gardens with 2 pools and gyms

City Quarter is extremely well placed with quick access to local cafes and eateries, Sydney Uni, RPA, parks and the city bus.

The above information provided has been furnished to us by the vendor/s. We have not verified whether or not that information is accurate and do not have any belief in one way or the other in its accuracy. We do not accept any responsibility to any person for its accuracy and do no more than pass it on. All interested parties should make and rely upon their own inquiries in order to determine whether or not this information is in fact accurate.

🛏 1 📶 1 🚗 1

Price	SOLD
Property Type	Residential
Property ID	1904

Agent Details

Emlyn Walters - 0405 606 025
emlyn@greenciff.com.au

Office Details

Greenciff Camperdown Office
Shop 1 1 Sterling Cct Camperdown NSW
2050 Australia
02 8262 8262

