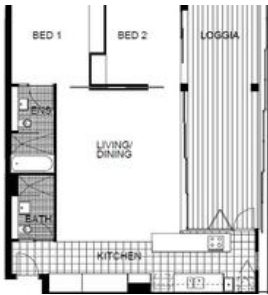


Sold



209 7 Sterling Circuit, Camperdown



SOLD PRIOR TO AUCTION!

A private and tranquil oasis set amongst the stunning surrounds of 'City Quarter', this 2nd floor apartment fuses an inspired floor plan with free-flowing indoor and outdoor living spaces overlooking the natural beauty of the park. Streaming with natural light aided by its prime corner of the building setting, it displays an exceptional array of quality finishes and a clever use of space.

- Very private rear of block, premium corner setting
- Expansive open plan living and dining, study nook
- Two walls of bi-folds fully retract to the large loggia
- Seamless living with a clever indoor/outdoor kitchen
- Marble benchtops, Smeg appliances, breakfast bench
- Generous bed, master with ensuite and loggia access
- Secure car space on title, concealed laundry, lift

Enjoy the excellent on-site amenities including two pools and gyms, a selection of cafes and eateries and 24hr security monitoring. It is placed just minutes to the best of the inner-west, bus, rail, RPA and Sydney Uni.

Auction taking place onsite on 25th October at 2:45PM

The above information provided has been furnished to us by the vendor/s. We have not verified whether or not that information is accurate and do not have any belief in one way or the other in its accuracy. We do not accept any responsibility to any person for its accuracy and do no more than pass it on. All interested parties should make and rely upon their own inquiries in order to determine whether or not this information is in fact accurate.

🛏 2 📶 2 🚗 1

Price	SOLD
Property Type	residential
Property ID	1897

Auction

Sunday 26 October, 1:45 AM

Agent Details

Nicola Ericson - 0410 433 445
nicola@greenciff.com.au

Office Details

Greenciff Sydney Kent St
Level 10/488 Kent Street Sydney NSW
2000 Australia
02 8823 8818

greenciff
Inner city specialists