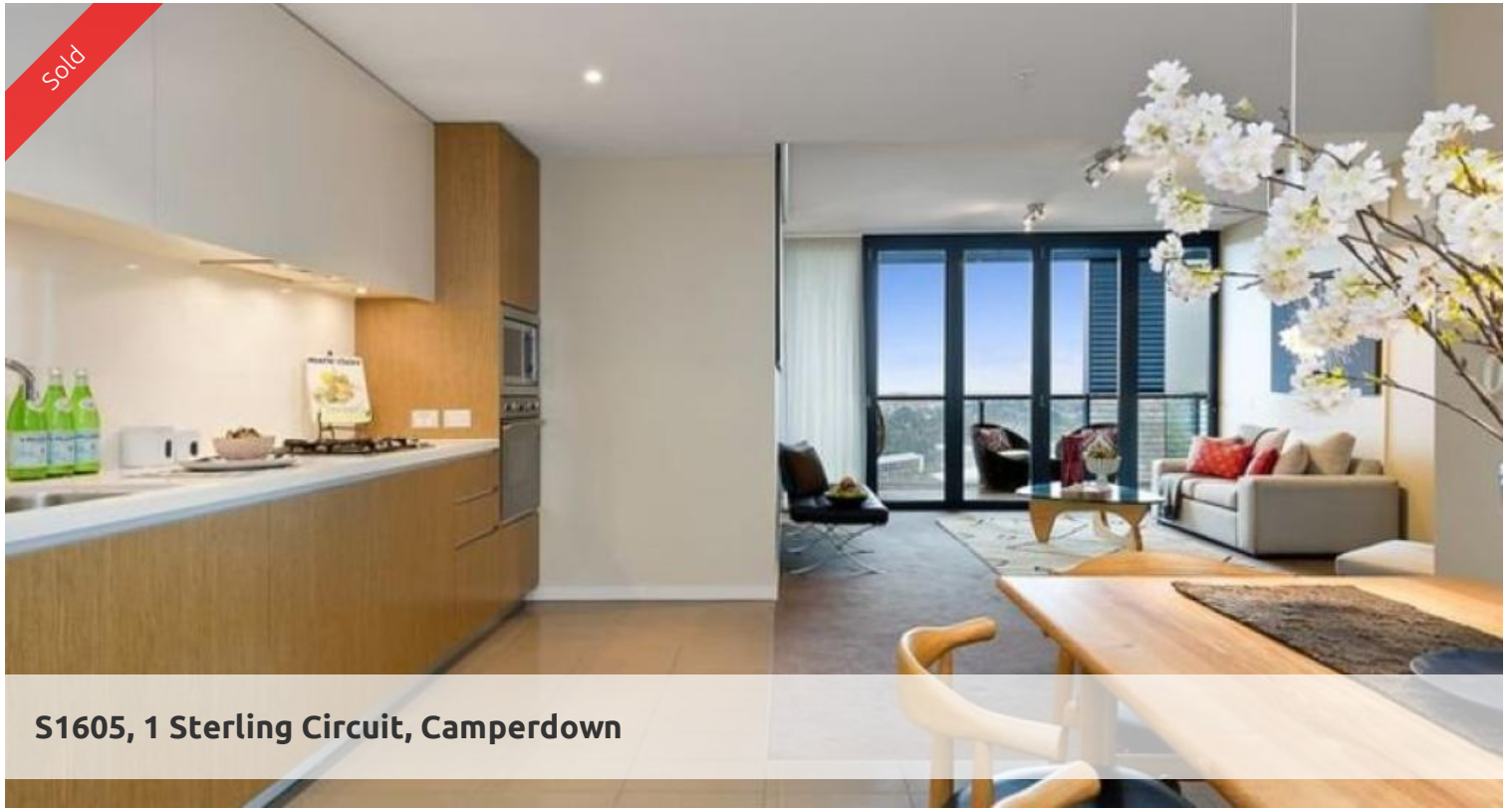
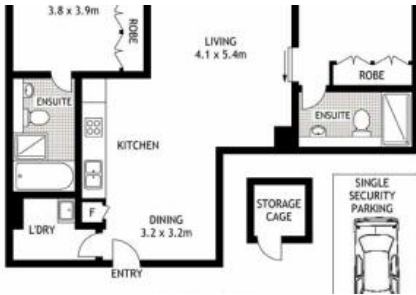


Sold



**S1605, 1 Sterling Circuit, Camperdown**



## LUXURY TOP FLOOR APARTMENT, SENSATIONAL PANORAMAS

Displaying inspired architectural vision combined with a privileged top floor setting, sweeping district panoramas and a luxury array of finishes, this substantial apartment provides an ideal urban sanctuary. Its unique floor plan ensures every room captures the superb views and offers perfect indoor/outdoor living with its generous loggia. Outside is equally as enticing with the two pools and gyms on-site and superb garden court surrounds.

- Spacious living, wall of bi-folds retracts to the loggia
- Quality galley kitchen, stone tops, Smeg appliances
- Separate dining, ducted air and an internal laundry
- Two well proportioned bedrooms both with robes
- Master with ensuite, 2nd bathroom is near the 2nd bed
- Prized secure car space on title, lift, intercom access
- Two on-site pools and gyms, café and 24hr security

'City Quarter' is a peaceful haven set amongst all the delights of the inner west. Walk to local shops and eateries, express buses, rail and the Sydney University.

The above information provided has been furnished to us by the vendor/s. We have not verified whether or not that information is accurate and do not have any belief in one way or the other in its accuracy. We do not accept any responsibility to any person for its accuracy and do no more than pass it on. All interested parties should make and rely upon their own inquiries in order to determine whether or not this information is in fact accurate.

🛏 2 📶 2 🚗 1

|                      |             |
|----------------------|-------------|
| <b>Price</b>         | SOLD        |
| <b>Property Type</b> | Residential |
| <b>Property ID</b>   | 1893        |

### Agent Details

Emlyn Walters - 0405 606 025  
emlyn@greenciff.com.au

### Office Details

Greenciff Camperdown Office  
Shop 1 1 Sterling Cct Camperdown NSW  
2050 Australia  
02 8262 8262

**greenciff**  
Inner city specialists