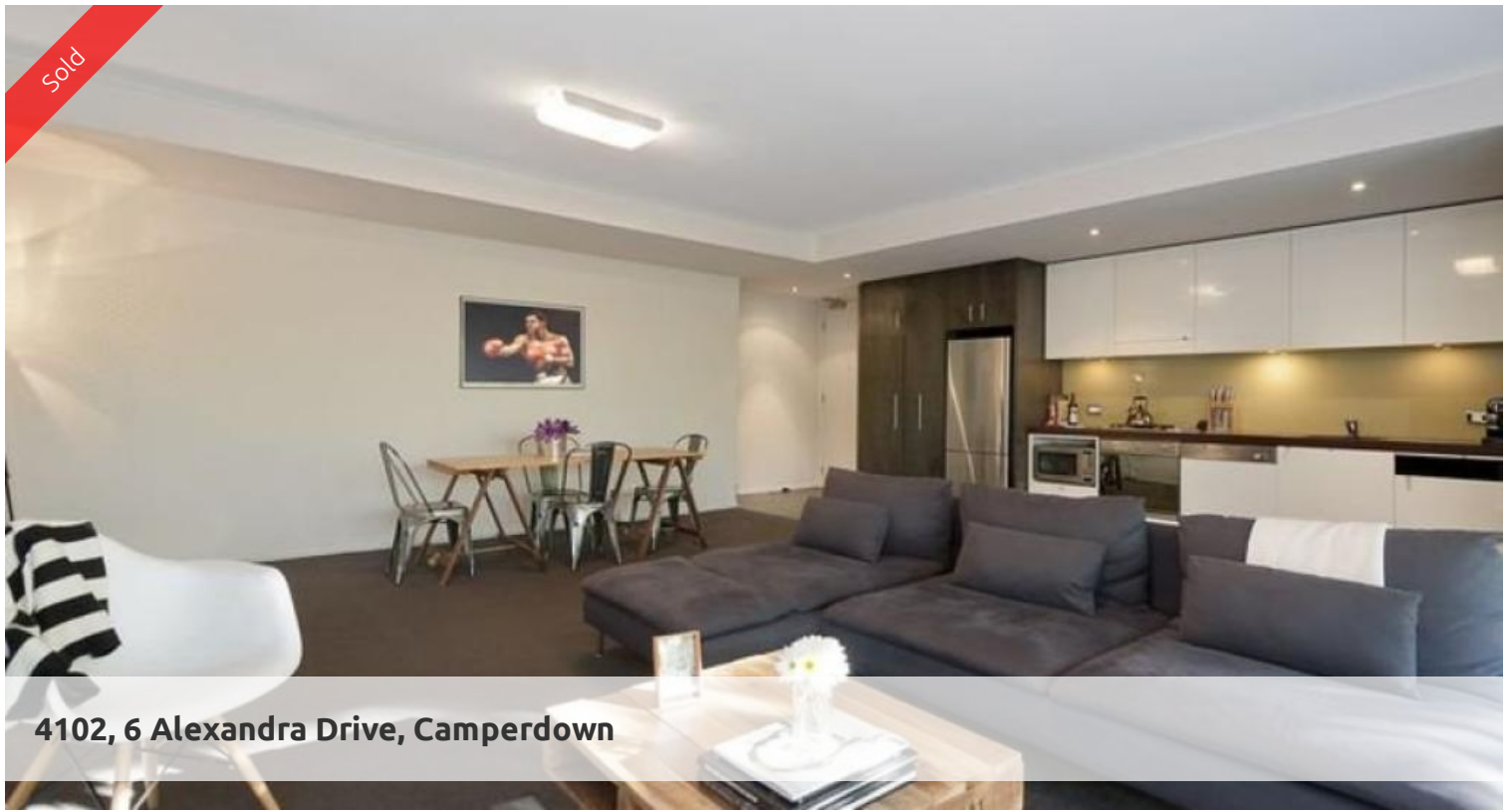


Sold



4102, 6 Alexandra Drive, Camperdown



### A stunning offering of size and designer appeal

Outstanding in its proportions, presentation and position, this stunning ground level apartment, providing superb in/outdoor living and seamlessly blending with its reserve like surrounds.

- The stylish interiors are adorned with quality finishes
- Sweeping open plan living, dining and galley kitchen
- A wall of glass retracts to the expansive alfresco terrace
- Large master suite with superb leafy outlook and BIRS
- Stylish bathroom, integrated laundry, storage areas
- Private entry to the rear communal decked picnic areas
- Superb on site pools, gyms and cafes, ultra-convenient

The above information provided has been furnished to us by the vendor/s. We have not verified whether or not that information is accurate and do not have any belief in one way or the other in its accuracy. We do not accept any responsibility to any person for its accuracy and do no more than pass it on. All interested parties should make and rely upon their own inquiries in order to determine whether or not this information is in fact accurate.

🛏 1 🚿 1 🚗 1

<b>Price</b>	SOLD
<b>Property Type</b>	Residential
<b>Property ID</b>	1885

#### Agent Details

William Chen - 0430 026 436  
william@greenciff.com.au

#### Office Details

Greenciff Sydney Kent St  
Level 10/488 Kent Street Sydney NSW  
2000 Australia  
02 8823 8818

**greenciff**  
Inner city specialists