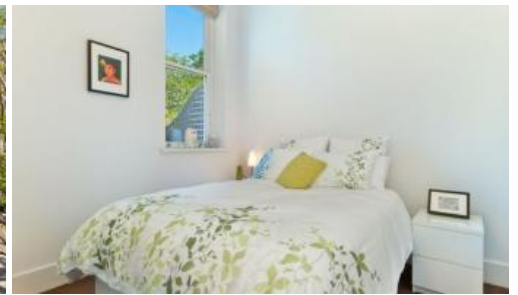




203, 30 Pyrmont Bridge Road, Camperdown



INSPECTION CANCELLED - SOLD \$715,000

Sleek, sophisticated and inspiring, this impressive 2nd floor apartment combines the best of both worlds resting as one of just 10 exclusive residences in the Suters Architect recreation of the heritage 'Alexandra'. Bathed in natural light and perfect for the entertainer, sweeping living and dining spaces extend to the wide balcony set amongst leafy surrounds.

- The generosity of space is enhanced by soaring high ceilings
- Expansive living with bespoke TV cabinet, grand dining room
- Gourmet stone kitchen with Smeg appliances, timber floors
- Wide balcony set amongst the leafy streetscape, designer lighting
- Inviting master bedroom with BIR's and 2 way ensuite bathroom
- New York style laundry, ample storage options, ducted air con
- One common wall, car space on title, security intercom, lift
- Exceptional amenities include 2 pools, 2 gyms, 24 hour security

A special and unique residence of spectacular style and verve, when it's time to leave, its position is unbeatable, just minutes to Sydney Uni, Broadway's wide mix of shops, cafes and restaurants, bus and the CBD.

The above information provided has been furnished to us by the vendor/s. We have not verified whether or not that information is accurate and do not have any belief in one way or the other in its accuracy. We do not accept any responsibility to any person for its accuracy and do no more than pass it on. All interested parties should make and rely upon their own inquiries in order to determine whether or not this information is in fact accurate.

🛏 1 📶 1 🚗 1 📏 89 m2

Price	SOLD
Property Type	Residential
Property ID	1864
Land Area	89 m2
Floor Area	93 m2

Agent Details

William Chen - 0430 026 436
william@greenciff.com.au

Office Details

Greenciff Sydney Kent St
Level 10/488 Kent Street Sydney NSW
2000 Australia
02 8823 8818

