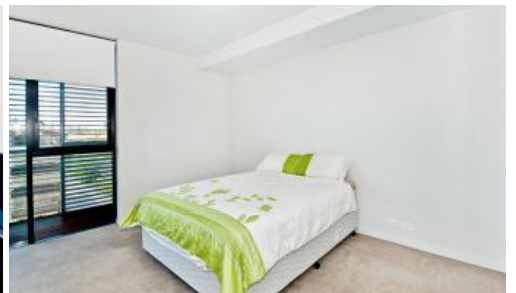


Sold



C606, 3 Sterling Circuit, Camperdown



TRIO: EAST FACING, CITY VIEWS, LUXURY APARTMENTS

Set high in the award winning "City Quarter" complex, this sophisticated east facing apartment has a functional floorplan, clear open views offering privacy and natural light, within an easy walk to the best in Village lifestyle.

- Bright east aspect, privacy, light
- City & Anzac Bridge views
- Expansive loggia, 16sqm
- Superb finishes throughout, neutral schemes
- Intercom, pool, gym and landscaped gardens
- Security parking, storeroom
- Storage, visitor parking

Exceptional facilities including your choice of two fully equipped gyms, heated indoor pool, 50 metre outdoor lap pool an onsite café, restaurant and convenience store. Only moments to Inner Wests best in food and entertainment options. Close proximity to Universities, RPAH, Broadway Shopping Centre and the CBD.

The above information provided has been furnished to us by the vendor/s. We have not verified whether or not that information is accurate and do not have any belief in one way or the other in its accuracy. We do not accept any responsibility to any person for its accuracy and do no more than pass it on. All interested parties should make and rely upon their own inquiries in order to determine whether or not this information is in fact accurate.

🛏 1 📶 1 🚗 1

Price	SOLD
Property Type	Residential
Property ID	1829
Land Area	0 m2

Agent Details

Emlyn Walters - 0405 606 025
emlyn@greenciff.com.au

Office Details

Greencliff Camperdown Office
Shop 1 1 Sterling Cct Camperdown NSW
2050 Australia
02 8262 8262

greenciff
Inner city specialists