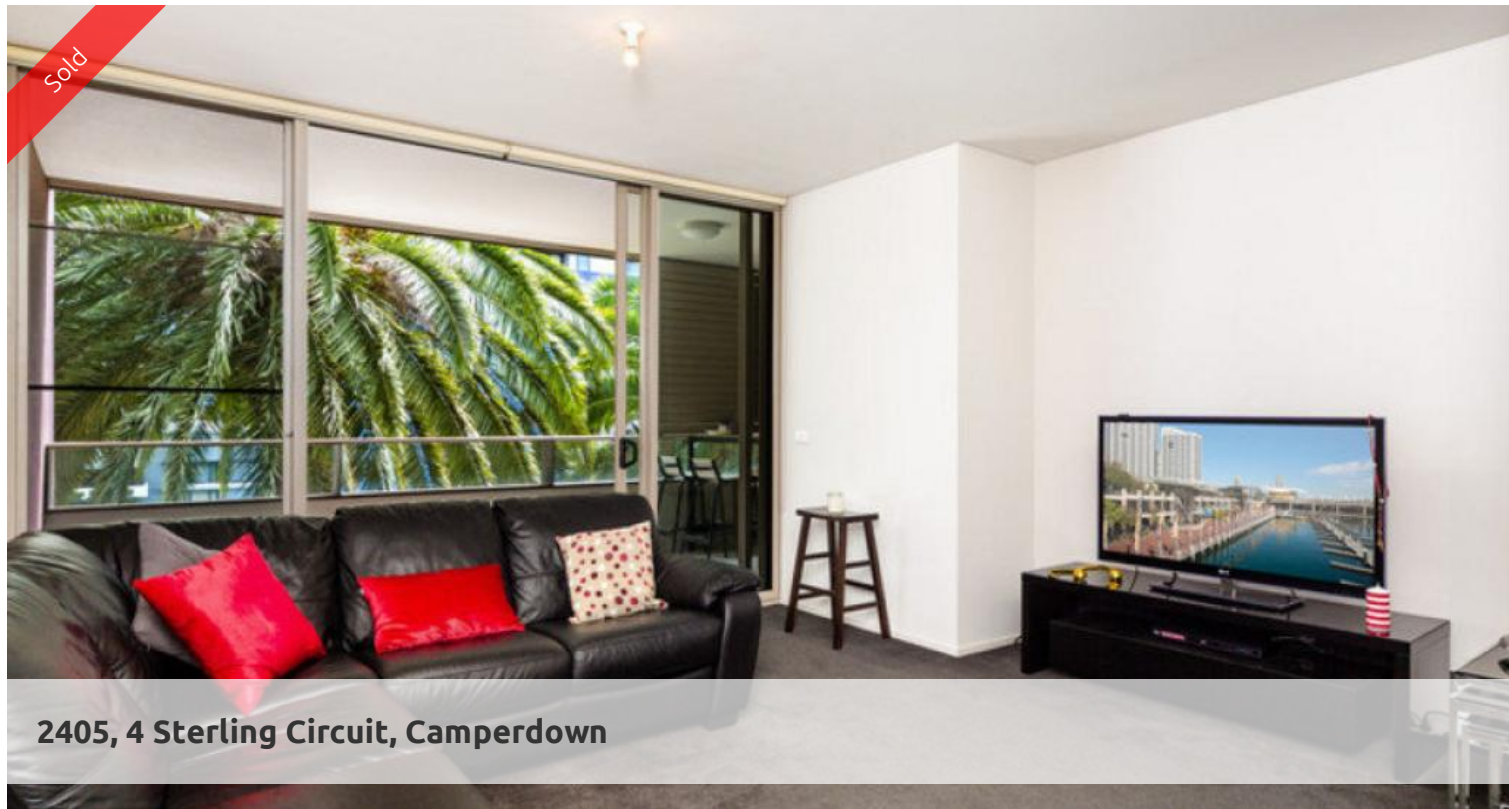
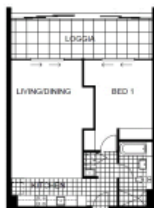


Sold



2405, 4 Sterling Circuit, Camperdown



VIE: Peaceful Parkside Position

Superbly positioned within "Vie 2" is this fabulous one bedroom apartment boasting a tranquil leafy outlook.

Features include:

- Modern open plan kitchen (gas cook top, dishwasher), sleek bathroom
- Spacious combined lounge / dining area, internal laundry facilities
- Generous bedroom with built-in wardrobes, loads of storage
- Lovely large balcony with leafy outlook spanning length of apartment

Being in The City Quarter Complex you will be able to enjoy the free, unlimited access to your choice of a 50 metre outdoor or 25m indoor pool and two gymnasiums. The complex also has 24 hour security, a Japanese restaurant, cafe & convenience store. Only a 10 minute bus ride to the city or an easy stroll to Glebe, Broadway, Leichhardt and Newtown which are just around the corner.

Strata \$1001.80 per quarter

Council \$180.00 per quarter

Water \$168.00 per quarter

The above information provided has been furnished to us by the vendor/s. We have not verified whether or not that information is accurate and do not have any belief in one way or the other in its accuracy. We do not accept any responsibility to any person for its accuracy and do no more than pass it on. All interested parties should make and rely upon their own inquiries in order to determine whether or not this information is in fact accurate.

🛏 1 📶 1 🚗 1

Price	SOLD
Property Type	Residential
Property ID	1828
Land Area	0 m2

Agent Details

William Chen - 0430 026 436
william@greencliff.com.au

Office Details

Greencliff Sydney Kent St
Level 10/488 Kent Street Sydney NSW
2000 Australia
02 8823 8818

