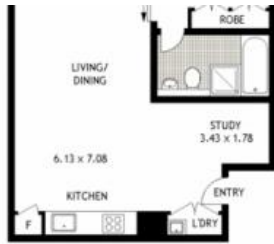
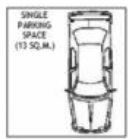


Sold



C1307, 3 Sterling Circuit, Camperdown



THIRTEENTH FLOOR



PREMIUM POSITION, TOTALLY PRIVATE, AMAZING VIEWS, 80SQM FLOOR PLAN!

Executive living and totally private, this desirable one bedroom apartment offers oversized living space boasting spectacular views stretching from the Blue Mountains to Botany Bay. Located high up on the thirteenth floor of the award-winning 'Trio' building, this immaculately presented apartment with high quality appointments is designed for effortless living.

Features include;

- Corner position, perched high on level 13
- Designer bathroom with bath and separate shower
- Loggia with shutters for privacy and comfort
- Secure undercover parking and storage cage
- Spacious bedroom with built-in robes
- Ducted reverse cycle air-conditioning
- Large study media alcove

Be part of City Quarter's established community, including an indoor heated swimming pool and gymnasium and a 50m outdoor pool, café, restaurant, convenience store, on-site 24/7 security.

Located at the centre of various transport links and Village lifestyle offered by Annandale and Glebe you're only moments away from the very best in Inner West dining, coffee and vibrant shopping. CBD, University, RPAH and Broadway Shopping Centre are only a short drive away.

Become a proud owner in this award winning development Trio recently received the following accolades:

🛏 1 📶 1 🚗 1

Price	SOLD
Property Type	Residential
Property ID	1822

Agent Details

Emlyn Walters - 0405 606 025
emlyn@greenciff.com.au

Office Details

Greenciff Camperdown Office
Shop 1 1 Sterling Cct Camperdown NSW
2050 Australia
02 8262 8262

