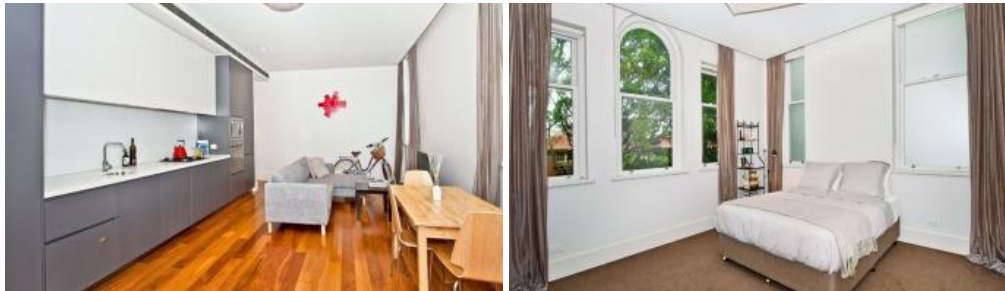




**105, 30 Pyrmont Bridge Road, Camperdown**



**"RARE OFFERING! BOUTIQUE APARTMENT IN HERITAGE ALEXANDRA BUILDING"**

Truly distinct and one of a kind when it comes to this superbly unique apartment, features include;

- 65sqm of true living space
- Polished timber floors
- Soaring 3.4m high ceilings
- Designer kitchen & bathroom
- Huge bedroom with built-ins
- Separate study nook fitted with media
- Ducted reverse cycle air-conditioning
- Loads of internal storage, pantry
- Off street parking

Alexandra is beautifully finished, following an inspired heritage reinvention by Sutera Architects. Just 10 apartments have been created within the original 1904 red brick and sandstone Edwardian building. The facade has been beautifully restored and enhanced by a sensitive foyer and landscape. Inside each apartment heritage influences are retained - notably in high ceilings and curved timber window frames.

Alexandra is part of City Quarter, an award-winning Inner West neighbourhood on the northern edge of Camperdown, between Glebe and Annandale. Alexandra's residents will enjoy all the benefits of City Quarters community, including a private indoor heated swimming pool and gymnasium, established gardens, local dining and a 50m outdoor pool.



<b>Price</b>	SOLD
<b>Property Type</b>	Residential
<b>Property ID</b>	1793
<b>Land Area</b>	0 m2
<b>Floor Area</b>	9 m2

**Agent Details**

Emlyn Walters - 0405 606 025  
emlyn@greenciff.com.au

**Office Details**

Greenciff Camperdown Office  
Shop 1 1 Sterling Cct Camperdown NSW  
2050 Australia  
02 8262 8262

