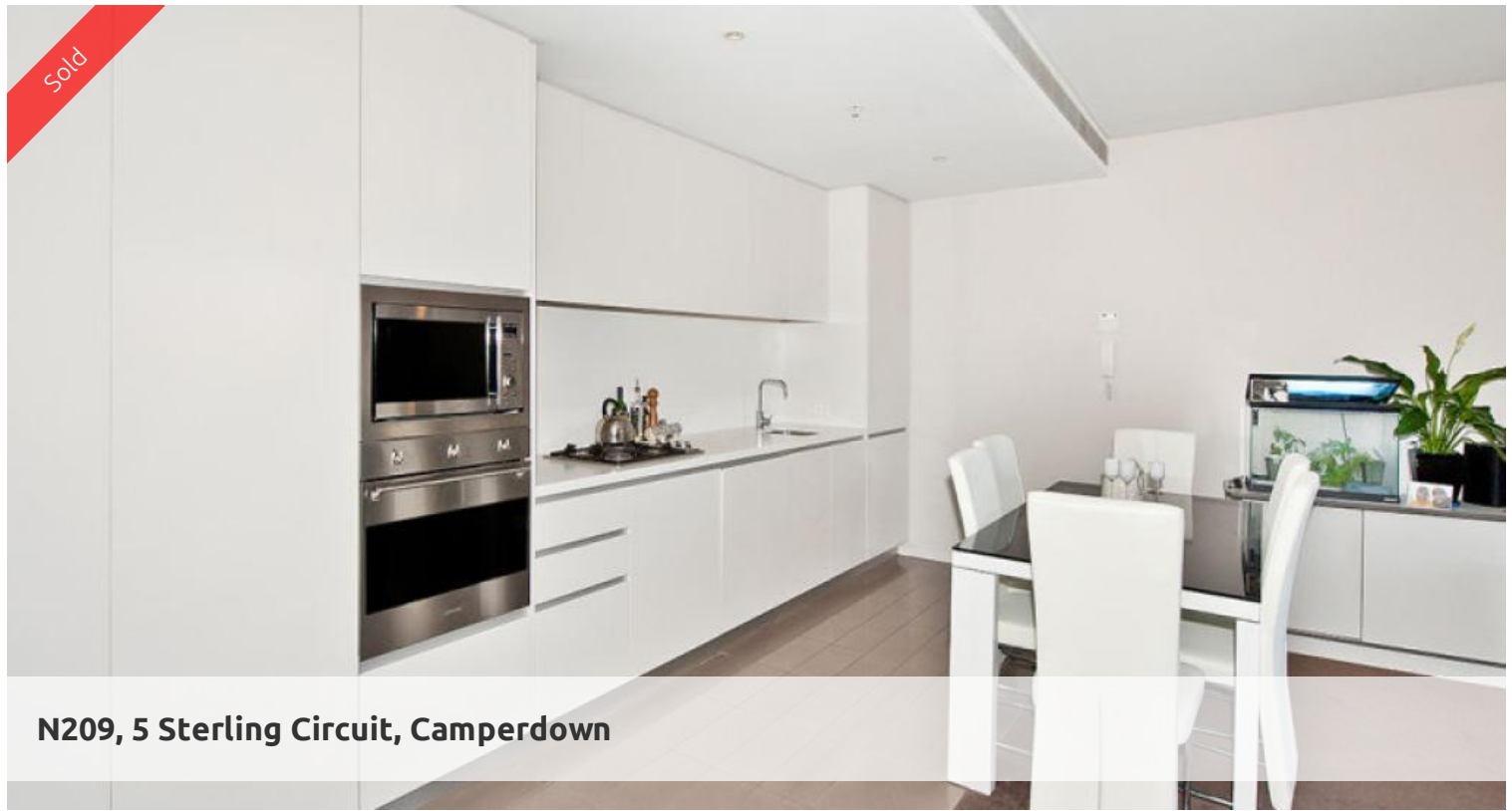


Sold



## N209, 5 Sterling Circuit, Camperdown



**TRIO**  
APARTMENT  
Internal: 63 sqm  
Building: 70 sqm  
Storage: 3 sqm  
Bike Locker: 2 sqm

STORAGE CAGE  
3 sqm  
WALKER  
2 sqm



### TRIO: HIGH END LUXURY, OVERSIZED ONE BEDROOM, 79SQM!

Attention first home buyers! This is your opportunity to secure your piece of TRIO!

This is the largest one bedroom floor plan type in Trio, privately positioned at the rear of the building; an ideal entry point into a much coveted "Inner West" address. Buyers are encouraged to act quickly as this property will not remain on the market for long.

Features Include:

- Corner position, 16sqm enclosable loggia
- Spacious bedroom with built-in robes
- Luxury finishes, Smeg appliances
- Flexible study/media alcove
- Reverse cycle air, dual zoned
- Basement storage, twin bike locker

Enjoy all the lifestyle benefits of an established estate, cafe, restaurants, 25 meter indoor pool and gym. 24/7 on site security.

Absolute convenience located between Glebe and Annandale Village, CBD, University, Broadway Shopping Centre, theatres, cafes and vibrant shopping. Royal Prince Alfred Hospital.

Investor note: current rental of \$525 p/w (month-to-month)

Outgoings (approx)  
 \$903.40 p/q Strata  
 \$174.80 p/q Council  
 \$146.00n/a Water

1 1

<b>Price</b>	SOLD
<b>Property Type</b>	Residential
<b>Property ID</b>	1791
<b>Land Area</b>	0 m2
<b>Floor Area</b>	84 m2

#### Agent Details

Emlyn Walters - 0405 606 025  
 emlyn@greycliff.com.au  
 William Chen - 0430 026 436  
 william@greycliff.com.au

#### Office Details

Greycliff Camperdown Office  
 Shop 1 1 Sterling Cct Camperdown NSW  
 2050 Australia  
 02 8262 8262

**greycliff**  
 Inner city specialists