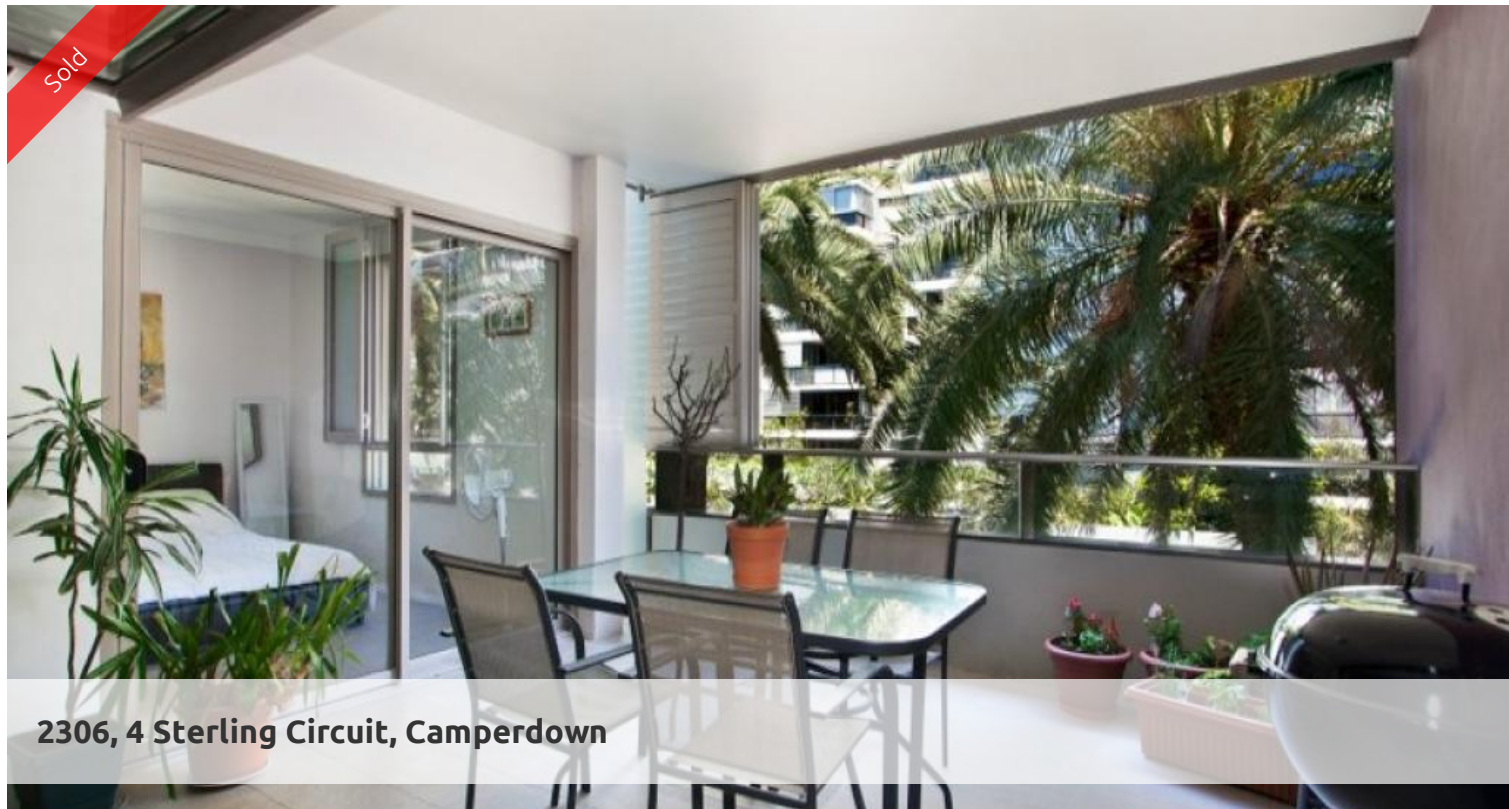
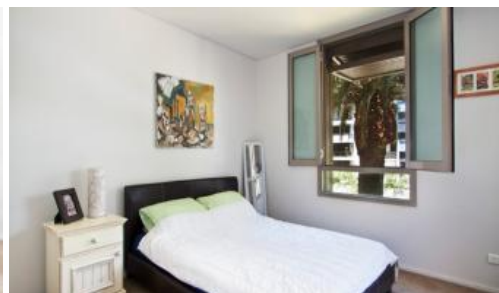


Sold



2306, 4 Sterling Circuit, Camperdown



### PARKSIDE RETREAT IN SUPERB LIFESTYLE LOCATION

Enjoying a leafy setting this one bedroom apartment is located in the highly desirable City Quarter development, offering cutting edge design in a highly sought after floor plan.

Features include:

- Peaceful lush outlook to mature palms and gardens
- Dual entry bathroom with bath and separate shower
- Loggia (outdoor room) with louvred shutters
- Spacious bedroom with built-in robes
- Luxury finishes/ Smeg appliances
- Internal laundry
- On site security (24/7)
- Two gyms and two pools (indoor 25 metre and outdoor 50 metre)

Conveniently located only moments from Glebe and Annandale Village, and in close proximity to Universities, RPAH, Broadway Shopping Centre and the CBD. This landmark residential village is a must see.

The above information provided has been furnished to us by the vendor/s. We have not verified whether or not that information is accurate and do not have any belief in one way or the other in its accuracy. We do not accept any responsibility to any person for its accuracy and do no more than pass it on. All interested parties should make and rely upon their own inquiries in order to determine whether or not this information is in fact accurate.

🛏 1 📶 1 🚗 2 🏠

<b>Price</b>	SOLD
<b>Property Type</b>	Residential
<b>Property ID</b>	1774
<b>Land Area</b>	0 m2

#### Agent Details

William Chen - 0430 026 436  
william@greenciff.com.au

#### Office Details

Greenciff Sydney Kent St  
Level 10/488 Kent Street Sydney NSW  
2000 Australia  
02 8823 8818

