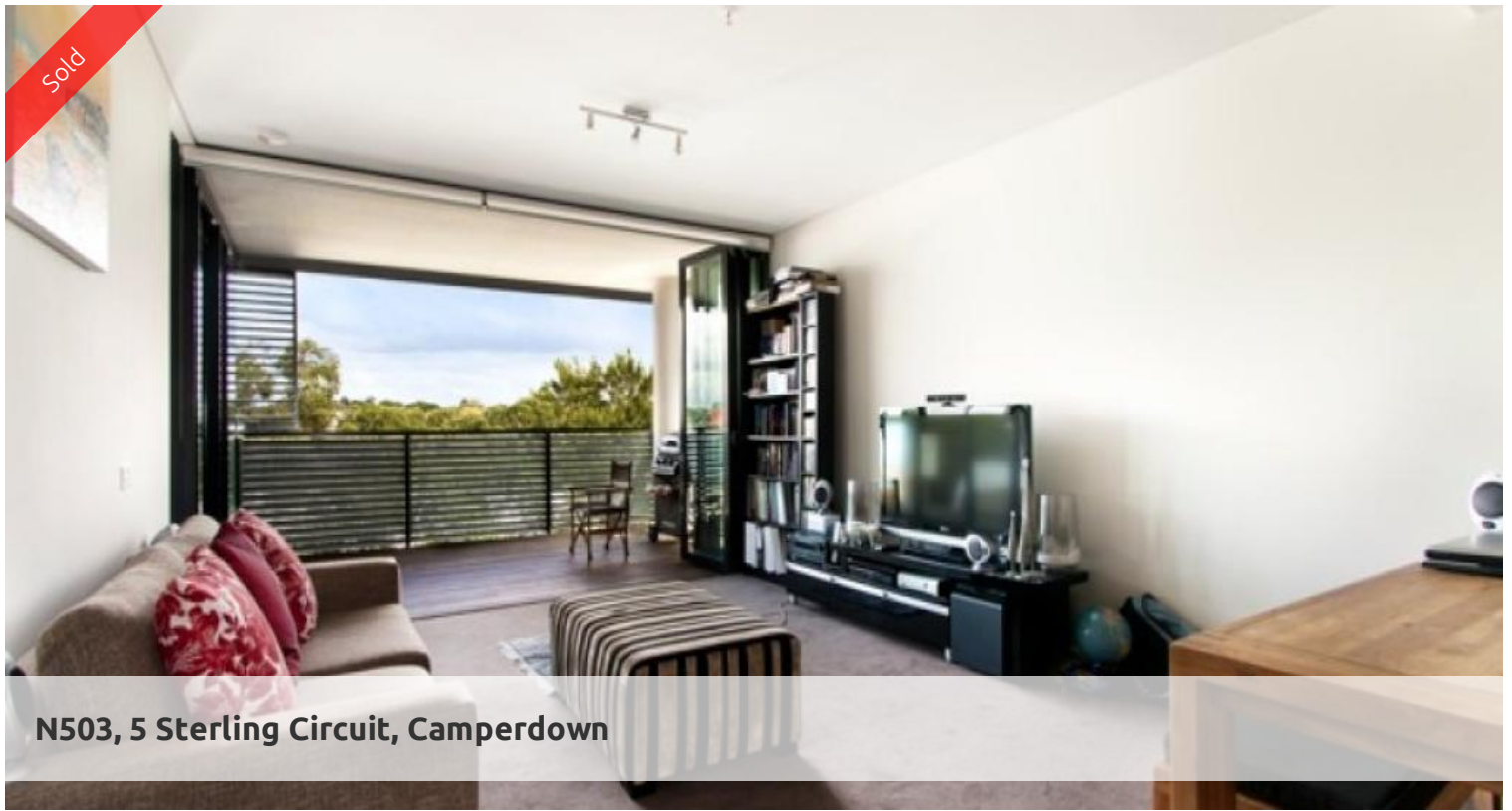
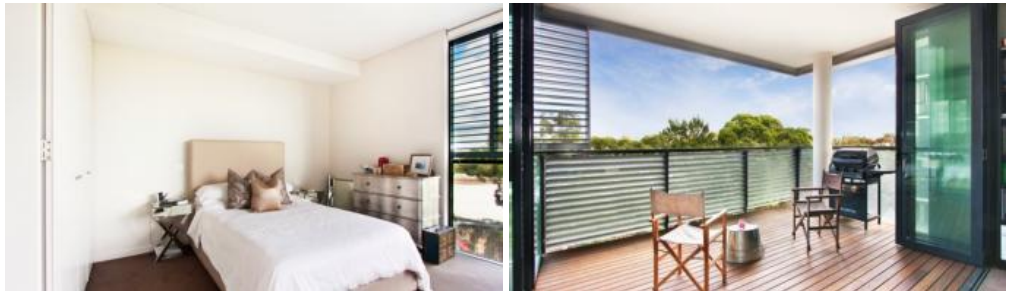


Sold



N503, 5 Sterling Circuit, Camperdown



TRIO I II III EXECUTIVE LUXURY LIVING

Spacious 75 sq metre luxury one bedroom apartment in the highly acclaimed, and recently completed, Trio development. The cutting edge design maximises indoor and outdoor space as well as providing an abundance of light.

Features include:

- Beautiful leafy outlook into tree tops
- Corner position, cross flow ventilation/light
- Dual entry bathroom with bath and separate shower
- Spacious bedroom with built-in robes
- Luxury finishes/ Smeg appliances
- Secure parking, basement storage
- Ducted air conditioning
- Study/Media nook

Trio is the final stage of the City Quarter development and offers a truly exceptional lifestyle, offering two gyms and two pools (indoor 25 metre and outdoor 50 metre lap) café, restaurants, 24/7 on-site security.

Absolute convenience only moments from Glebe and Annandale Village, and in close proximity to Universities, RPAH, Broadway Shopping Centre and the CBD.

Outgoings (approx)

Strata \$810.81p/q

Water \$148.00p/q



Price	SOLD
Property Type	Residential
Property ID	1737
Land Area	0 m2

Agent Details

William Chen - 0430 026 436
william@greenciff.com.au

Office Details

Greenciff Sydney Kent St
Level 10/488 Kent Street Sydney NSW
2000 Australia
02 8823 8818

