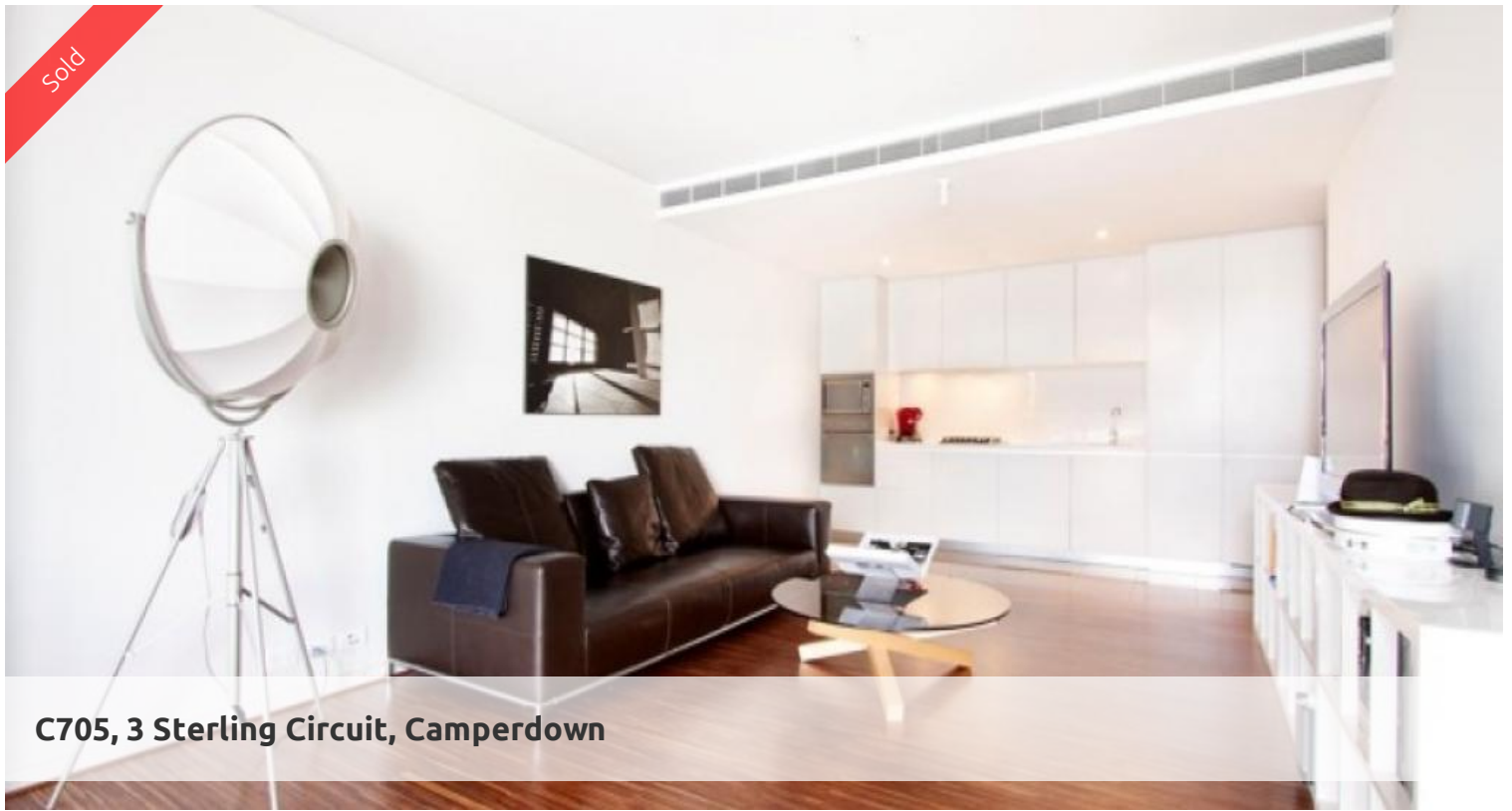


Sold



C705, 3 Sterling Circuit, Camperdown



DESIGNER LIVING, SYDNEY SKYLINE VIEWS

This is an exciting opportunity to secure an exclusive piece of real estate in the architecturally designed Fender Katsalidis, Trio building, Developed to International standards by Frasers Property

- Spacious open plan living with easterly aspect
- City, harbor/Anzac Bridge views
- East facing entertainers loggia 11sqm
- Gourmet kitchen with Smeg appliances
- Large bedroom with built-ins and balcony access
- Intercom, pool, gym and landscaped gardens
- Dual access bathroom, separate bath/shower
- Beautiful polished timber floors
- Security parking, storeroom
- Immaculately maintained building
- Valuable media/study

Enjoy every convenience this urban haven has to offer, 25 meter indoor pool + 50 meter infinity lap pool, choice of two gyms, 24/7 on-site security, cafes, restaurants and mini-mart.

Only moments to Inner West's best in food and entertainment. Close proximity to Universities, RPAH, Broadway Shopping Centre and the CBD, this contemporary 71sqm one bedroom apartment with magnificent views will tick all the boxes for your next home or investment.

The above information provided has been furnished to us by the vendor/s. We have not verified whether or not that information is accurate and do not have any belief in one way or the other in its accuracy. We do not accept any responsibility to any person for its accuracy and do no more than exercise. All interested parties should make and rely upon their own inquiries in order to determine

🛏 1 🌐 2 🚗 2 🏠

Price	SOLD
Property Type	Residential
Property ID	1729
Land Area	0 m2
Floor Area	74 m2

Agent Details

Emlyn Walters - 0405 606 025
emlyn@greenciff.com.au

Office Details

Greenciff Camperdown Office
Shop 1 1 Sterling Cct Camperdown NSW
2050 Australia
02 8262 8262

greenciff
Inner city specialists