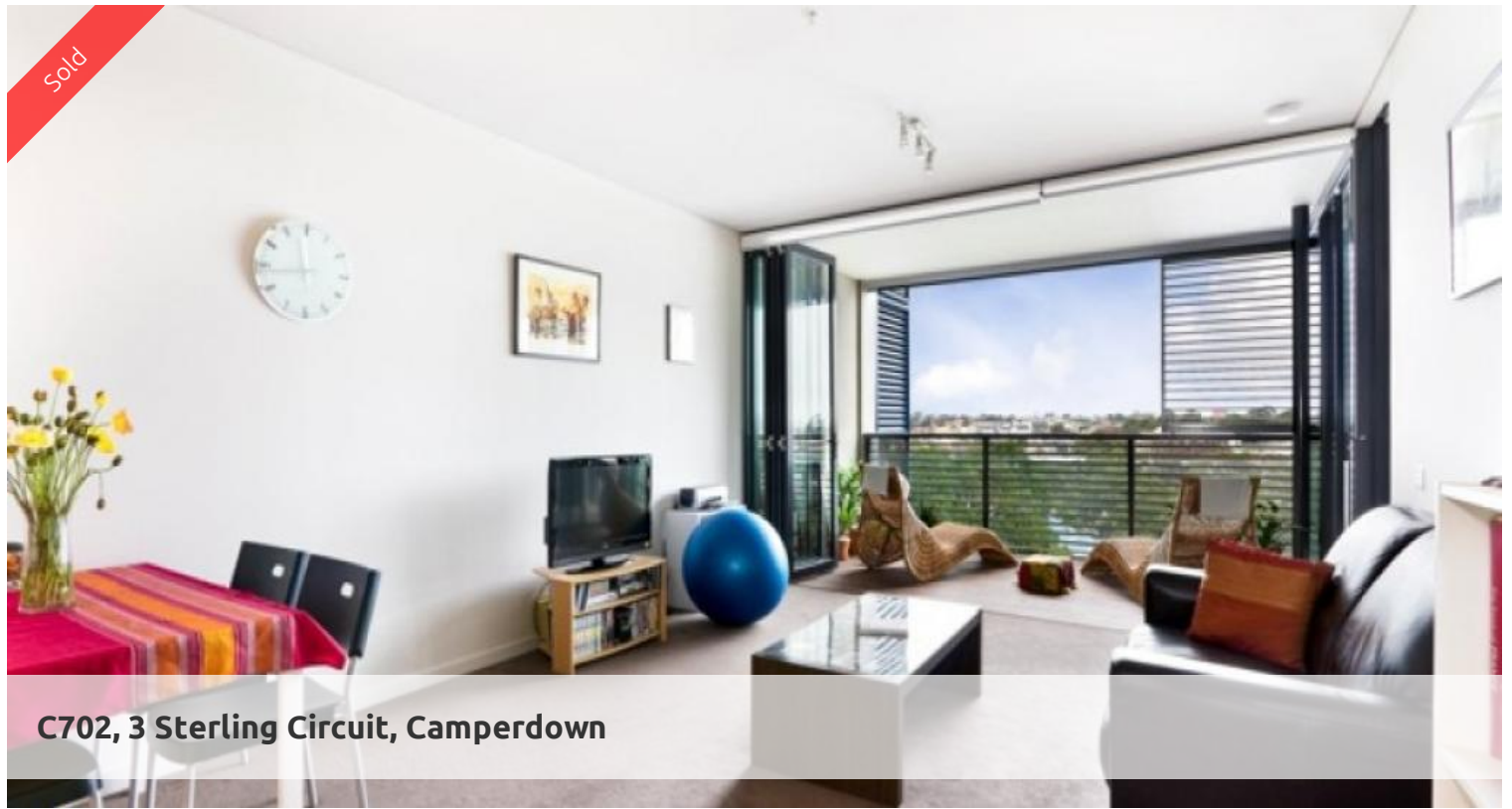
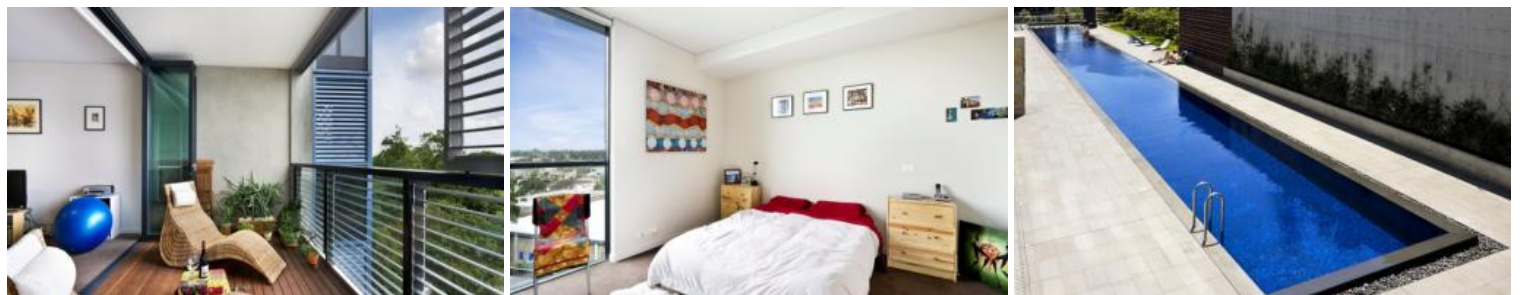


Sold



**C702, 3 Sterling Circuit, Camperdown**



### TRIO: POPULAR ONE BEDROOM + STUDY FLOOR PLAN

Spacious 71 sq metre luxury one bedroom apartment in the highly acclaimed, and recently completed, Trio development (the final stage of the City Quarter estate). The cutting edge design maximises indoor and outdoor space as well as providing an abundance of light.

Features include:

- Intimate district views of the inner west
- Dual entry bathroom with bath and separate shower
- Loggia (outdoor room) with wooden deck and louvred shutters
- Large lock up storage cage
- Spacious bedroom with built-in robes
- Luxury finishes/ Smeg appliances
- Ducted air conditioning
- Internal laundry
- On site security (24/7)
- Study nook
- Two gyms and two pools (indoor 25 metre and outdoor 50 metre)

Conveniently located only moments from Glebe and Annandale Village, and in close proximity to Universities, RPAH, Broadway Shopping Centre and the CBD, the property presents opportunity for owner/occupiers seeking a vibrant lifestyle as well as the astute investor.

(NB: Blinds, fridge and depreciation schedule included in sale)

OUTGOINGS (approx)

🛏 1 🚿 1 🚗 2

<b>Price</b>	SOLD
<b>Property Type</b>	Residential
<b>Property ID</b>	1705
<b>Land Area</b>	0 m2

#### Agent Details

Emlyn Walters - 0405 606 025  
emlyn@greenciff.com.au

#### Office Details

Greencliff Camperdown Office  
Shop 1 1 Sterling Cct Camperdown NSW  
2050 Australia  
02 8262 8262

**greenciff**  
Inner city specialists