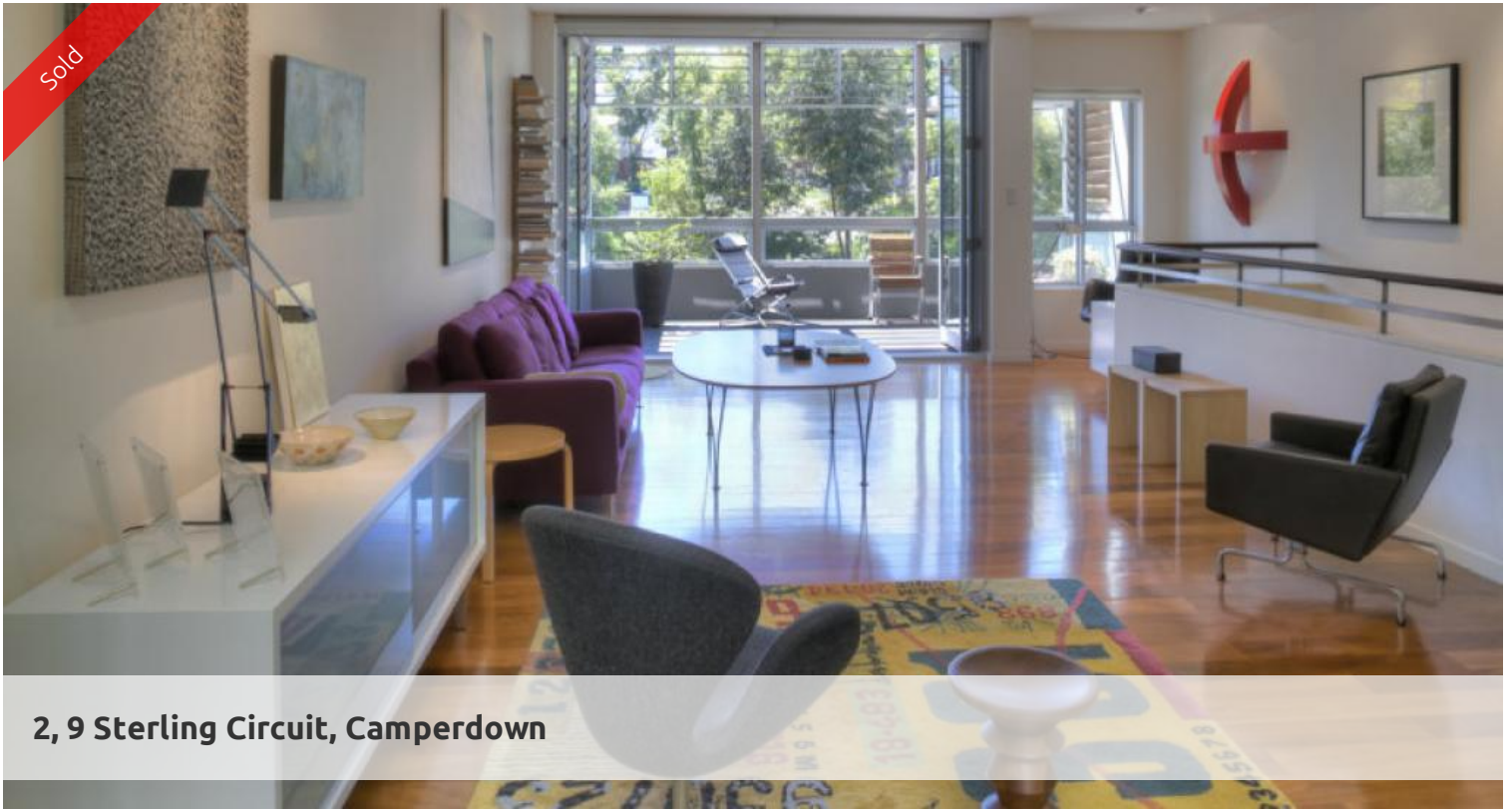
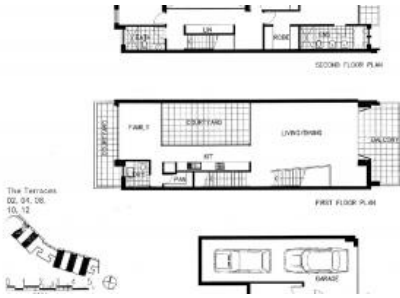


Sold



2, 9 Sterling Circuit, Camperdown



SOLD FOR A RECORD PRICE ! CALL VICTOR MORRY MAIA ON 0407 330 033

Generous designer home over three levels, light filled interiors, inspiring flexible indoor/outdoor living spaces, this immaculately presented unique residence is set in a super peaceful park side location moments away from village lifestyle.

Features include

- Prized due north aspect, flowing open plan design
- Internal atrium/terrace embracing kitchen and dining areas
- Gourmet open plan kitchen with European appliances
- Double bedrooms with built-in robes/ 2.5 bathrooms
- Enclosable entertainer's balcony flowing off living room
- Double garage with internal access to the terrace.
- Polished floors w/ built-in under floor heating
- Storeroom, alarm security, rev cycle a/c
- Landscaped private rear courtyard
- Separate study area
- Internal laundry

Enjoy all the lifestyle benefits of an established estate, cafe, restaurants, Choice of 25 meter indoor pool or 50m outdoor lap pool and two gyms .24/7 on-site security.

Located only moments to Glebe and Annandale Village, CBD, University, Broadway, Royal Prince Alfred Hospital, Shopping Centre, theatres, cafes and vibrant shopping.

This is an enviable home in and highly sought after location and will not last!

🛏 3 📶 3 🚗 2

| | |
|----------------------|-------------|
| Price | SOLD |
| Property Type | Residential |
| Property ID | 1687 |
| Land Area | 0 m2 |

Agent Details

William Chen - 0430 026 436
william@greenciff.com.au

Office Details

Greenciff Sydney Kent St
Level 10/488 Kent Street Sydney NSW
2000 Australia
02 8823 8818

