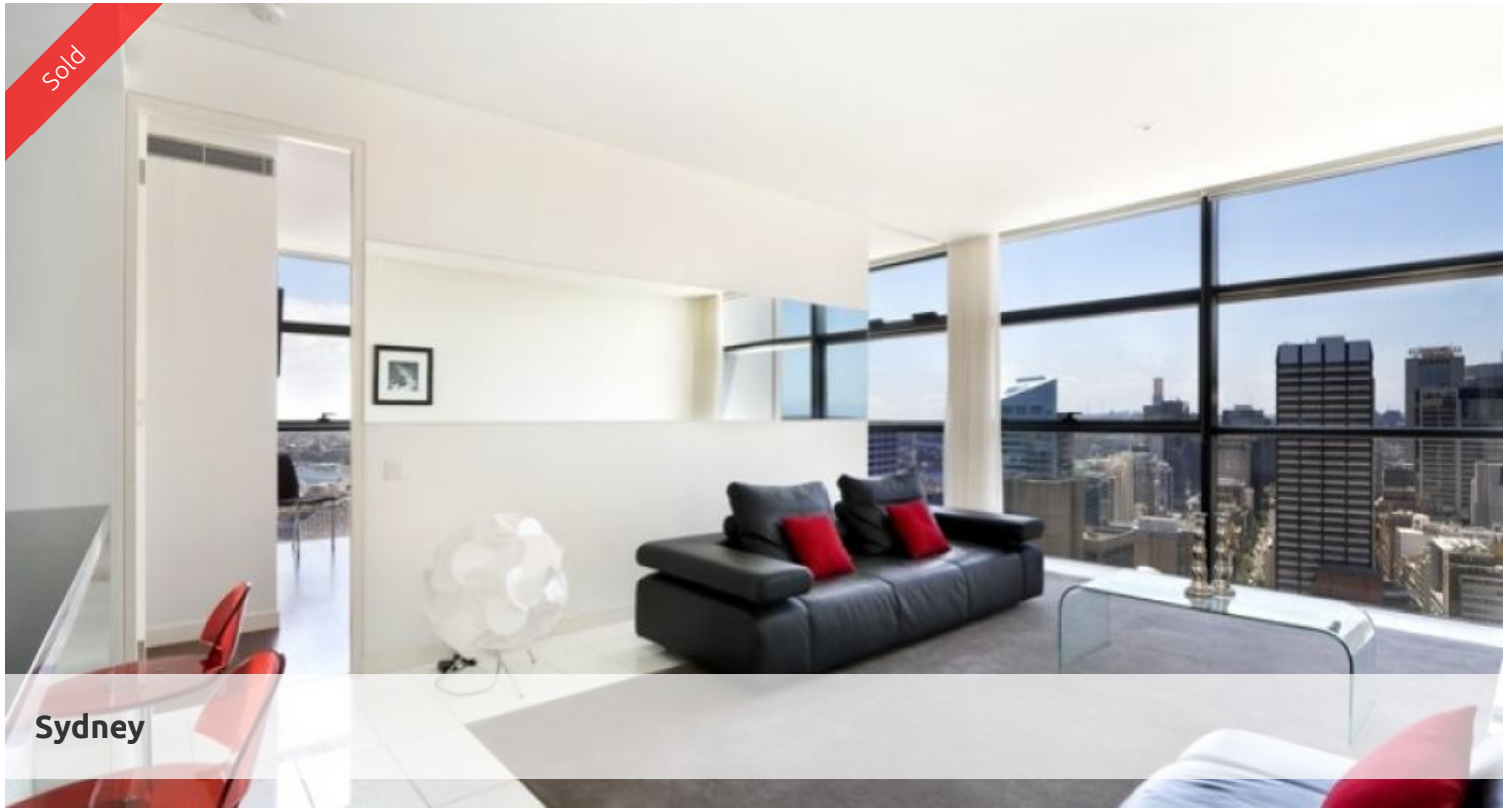
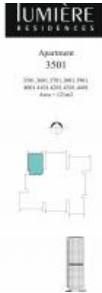


Sold



Sydney



Award winning Lumiere Sydney, great views, prime north aspect

Arguably holding the prime location within Lumiere. This three bedroom located on level 43 boasts phenomenal views across the heritage precinct of St Andrews Cathedral, Sydney Town Hall, and the QVB to harbour views of both Darling Harbour to the North West and The Heads of Sydney Harbour to the North East. The Western view corridor takes in sweeping views right out to sunsets over the full scope of the Blue Mountains.

Property is being offered fully and immaculately furnished in a modern contemporary style. It represents a rare opportunity to secure the most sought after aspect within what is generally accepted now as Sydney's best residential building, Lumiere Sydney.

Incorporating the unique Foster & Partners Loggia design concept that seamlessly blends living areas into internal balcony spaces.

Make the most of Lumiere's benchmarking Club Lumiere facilities, incorporating 50m pool, gyms, spas, steam room, sauna, theatre's and full time concierge and security. This apartment offers a wonderful residential opportunity in the heart of Sydney, in Sydney's finest residential development.

The above information provided has been furnished to us by the vendor/s. We have not verified whether or not that information is accurate and do not have any belief in one way or the other in its accuracy. We do not accept any responsibility to any person for its accuracy and do no more than pass it on. All interested parties should make and rely upon their own inquiries in order to determine whether or not this information is in fact accurate.

3 bedrooms, 2 bathrooms, 1 parking space, pet friendly

Price	SOLD
Property Type	Residential
Property ID	1681
Land Area	0 m2

Agent Details

David Butt - 0404 070 456
david@greencliff.com.au

Office Details

Greencliff Sydney Kent St
Level 10/488 Kent Street Sydney NSW
2000 Australia
02 8823 8818

