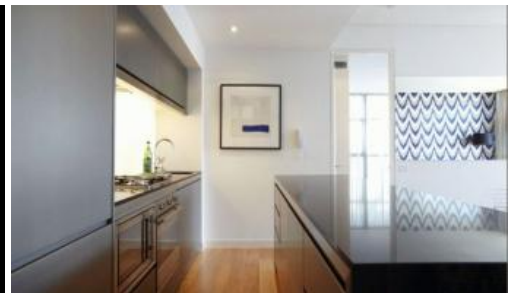


Sold



2701, 101 Bathurst Street, Sydney



Spectacular living in award winning Lumiere Sydney

This beautiful north facing property located on level 27 with prime location is a must see property for discerning inner city owner occupiers and investors alike. Offering a 109sqm of luxurious living this two bedroom apartment incorporates the unique Foster & Partners Loggia design concept that seamlessly blends living areas into internal balcony spaces. Enjoy an untouchable prime North aspect with views overlooking the heritage listed Mid-Town precinct of Town Hall & the QVB. Be intimately engaged with the beauty of St Andrews Cathedral. Make the most of Lumiere's benchmarking Club Lumiere facilities, incorporating 50m pool, gyms, spas, steam room, sauna, theatre's and full time concierge and security. This apartment offers a wonderful residential opportunity in the heart of Sydney, in Sydney's finest residential development.

The above information provided has been furnished to us by the vendor/s. We have not verified whether or not that information is accurate and do not have any belief in one way or the other in its accuracy. We do not accept any responsibility to any person for its accuracy and do no more than pass it on. All interested parties should make and rely upon their own inquiries in order to determine whether or not this information is in fact accurate.

2 2 1

Price	SOLD
Property Type	Residential
Property ID	1673
Land Area	0 m2
Floor Area	111.48 m2

Agent Details

William Chen - 0430 026 436
william@greenciff.com.au

Office Details

Greenciff Sydney Kent St
Level 10/488 Kent Street Sydney NSW
2000 Australia
02 8823 8818

greenciff
Inner city specialists