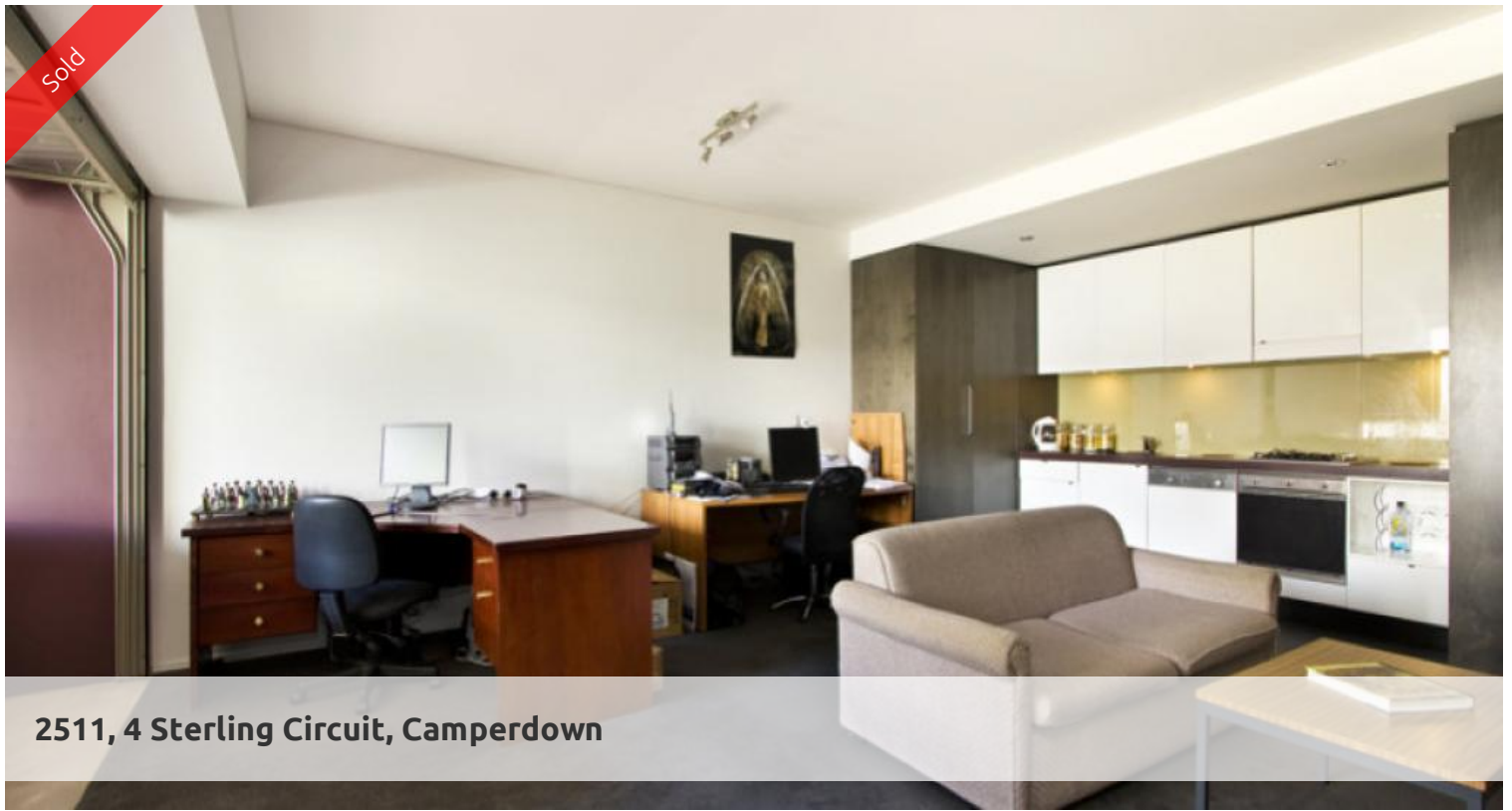
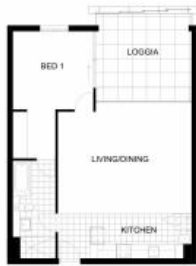


Sold



2511, 4 Sterling Circuit, Camperdown



### LOGGIA APARTMENT IN VIE 2 OVERLOOKING VILLAGE GREEN

Ideal opportunity for first home buyers or astute investors

- Prized east position, bathed in natural light
- Thoughtful open plan to maximize internal/external space
- Dual access bathroom with bath and separate shower
- Modern kitchen with Smeg appliances & ample storage
- Large windows allow for cross flow ventilation
- Loggia with shutters for privacy and comfort
- Oversized bedroom with built-ins
- Secure under cover parking
- Quiet position

Enjoy all the lifestyle benefits of an established estate, cafe, restaurants, 25 meter indoor pool and gym. 24/7 on-site security.

Super peaceful and convenient location only moments to Glebe and Annandale Village, CBD, University, Broadway Shopping Centre, theatres, cafes and vibrant shopping.

- Strata rates  
\$868.44 per quarter (approx)
- Council rates  
\$200.00 per quarter (approx)
- Water rates  
\$135.00 per quarter (approx)

🛏 1 🗺 1 🚗 1

<b>Price</b>	SOLD
<b>Property Type</b>	Residential
<b>Property ID</b>	1666
<b>Land Area</b>	0 m2

#### Agent Details

William Chen - 0430 026 436  
william@greenciff.com.au

#### Office Details

Greenciff Sydney Kent St  
Level 10/488 Kent Street Sydney NSW  
2000 Australia  
02 8823 8818

