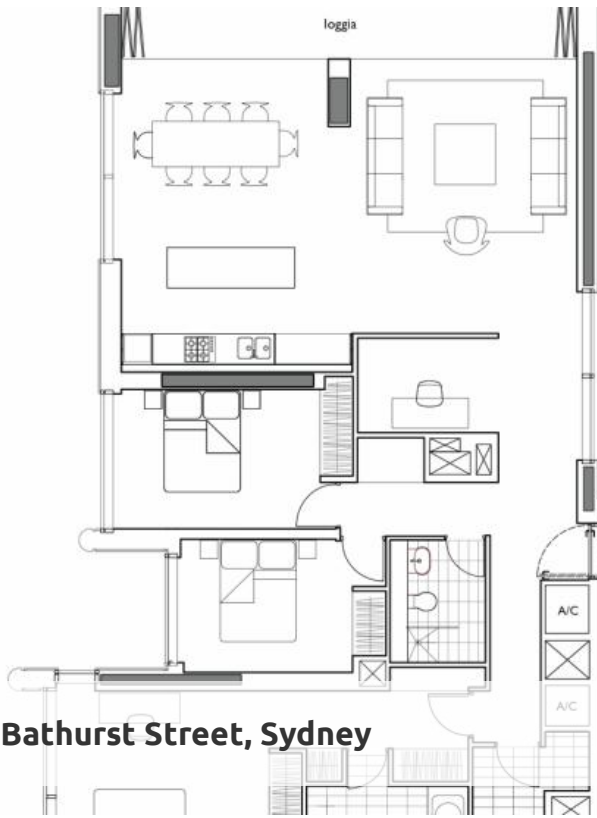


Sold

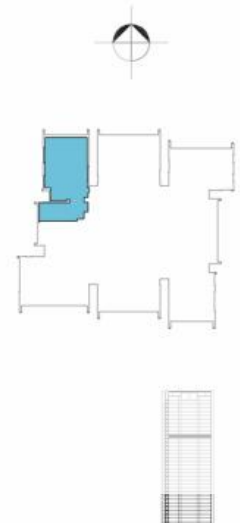


5101, 101 Bathurst Street, Sydney

LUMIERE  
RESIDENCES

Apartment  
4501

4501.4601.4701.4801.4901.  
5001.5101.5201.5301.  
Area = 164m<sup>2</sup>



Lumiere Sydney. Foster & Partners best apartment in award winning development.

Located on the 51st level of the luxurious Lumiere residences, this amazing apartment boasts stunning North facing views over Sydney Harbor, Town Hall, St Andrews Cathedral and the QVB.

Built by Frasers Property, Lumiere is Sydney's newest, most elegant and innovative residential tower. Designed by internationally renowned architect Lord Norman Foster (Foster & Partners London), Lumiere has defined modern living for Sydney as the 'vertical village'.

Apartment 5101 has the prime location and floor plan within Lumiere. This three bedroom plus study layout boasts phenomenal views across the heritage precinct of St Andrews Cathedral, Sydney Town Hall, and the QVB to full harbor views of both Darling Harbor to the North West and The Heads of Sydney Harbor to the North East. The Western view corridor takes in sweeping views right out to sunsets over the full scope of the Blue Mountains.

Fully and immaculately furnished in a modern contemporary style, informed by Italian color and design, this apartment is for sale as is. It represents a rare opportunity to secure the most sought after aspect and layout within what is generally accepted now as Sydney's best residential building, Lumiere.

Experience Lumiere. Visit our show room on Level 43 at 101 Bathurst Street (+61 2 9264 4887). Alternatively, please call David (0404 228 902) or Nick (0416 188 883) to enquire further.

3 3 2

<b>Price</b>	SOLD
<b>Property Type</b>	Residential
<b>Property ID</b>	1646
<b>Land Area</b>	0 m <sup>2</sup>
<b>Floor Area</b>	167 m <sup>2</sup>

#### Agent Details

David Butt - 0404 070 456  
david@greenciff.com.au

#### Office Details

Greenciff Sydney Kent St  
Level 10/488 Kent Street Sydney NSW  
2000 Australia  
02 8823 8818

**greenciff**  
Inner city specialists