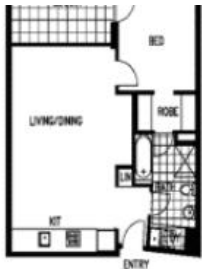


Sold



## 45, 4 Alexandra Drive, Camperdown



SOLD BY CITY QUARTER AGENCY, CALL VICTOR MORRY MAIA ON 0407 330 033

Incredibly rare opportunity awaits to secure a truly unique apartment in the highly sought after "Aquilon" building.

This is a perfect opportunity to acquire an astute investment currently yielding an amazing 5.5%.

- Beautiful city skyline and lush district views
- Prized peaceful north east aspect
- Dual entry bathroom with bath and separate shower
- Thoughtful floor plan to maximise internal/external space
- Loggia with shutters for privacy and comfort
- Massive 25m storage cage, rented for \$170per month

Enjoy all the lifestyle benefits of an established estate, cafe, restaurants, 25 metre indoor pool and gym. 24/7 on site security.

Super peaceful and convenient location only moments to Glebe and Annandale Village, CBD, University, Broadway Shopping Centre, theatres, cafes and vibrant shopping.

You can have it all ! Call Victor Morry Maia on 0407 330 033 for an appointment.

The above information provided has been furnished to us by the vendor/s. We have not verified whether or not that information is accurate and do not have any belief in one way or the other in its accuracy. We do not accept any responsibility to any person for its accuracy and do no more than pass it on. All interested parties should make and rely upon their own inquiries in order to determine whether or not this information is in fact accurate.

🛏 1 🏠 1 🚗 1

<b>Price</b>	SOLD
<b>Property Type</b>	Residential
<b>Property ID</b>	1642
<b>Land Area</b>	0 m2

### Agent Details

William Chen - 0430 026 436  
william@greenciff.com.au

### Office Details

Greencliff Sydney Kent St  
Level 10/488 Kent Street Sydney NSW  
2000 Australia  
02 8823 8818

**greenciff**  
Inner city specialists