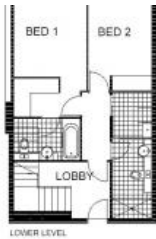
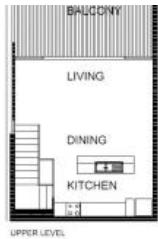


Sold



34, 10 Pyrmont Bridge Road, Camperdown



SOLD BY CITY QUARTER AGENCY, CALL VICTOR MORRY MAIA ON 0407 330 033

Perched on the top floor of the "Etage" building in the City Quarter complex is this two bedroom, two bathroom apartment with stunning sweeping district views.

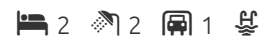
Features include;

- Prized north west corner setting with leafy district outlook
- Quiet & private top floor position, spanning over two levels
- Gourmet fully fitted Smeg kitchen with island bench
- Large timber deck bathed in natural light
- Floor to ceiling windows allowing for natural light and ventilation
- Two large bedrooms with built-ins (main with ensuite)
- Two mosaic tiled bathrooms, ensuite with bath and shower

Apartment has one security undercover parking. Pool and gym facilities and 24/7 security located on site.

City Quarter is located between the eclectic villages of Glebe and Annandale, moments to CBD, Broadway Shopping Centre, Royal Prince Alfred Hospital and city's university precinct.

The above information provided has been furnished to us by the vendor/s. We have not verified whether or not that information is accurate and do not have any belief in one way or the other in its accuracy. We do not accept any responsibility to any person for its accuracy and do no more than pass it on. All interested parties should make and rely upon their own inquiries in order to determine whether or not this information is in fact accurate.



Price	SOLD
Property Type	Residential
Property ID	1635
Land Area	0 m2

Agent Details

William Chen - 0430 026 436
william@greenciff.com.au

Office Details

Greenciff Sydney Kent St
Level 10/488 Kent Street Sydney NSW
2000 Australia
02 8823 8818

