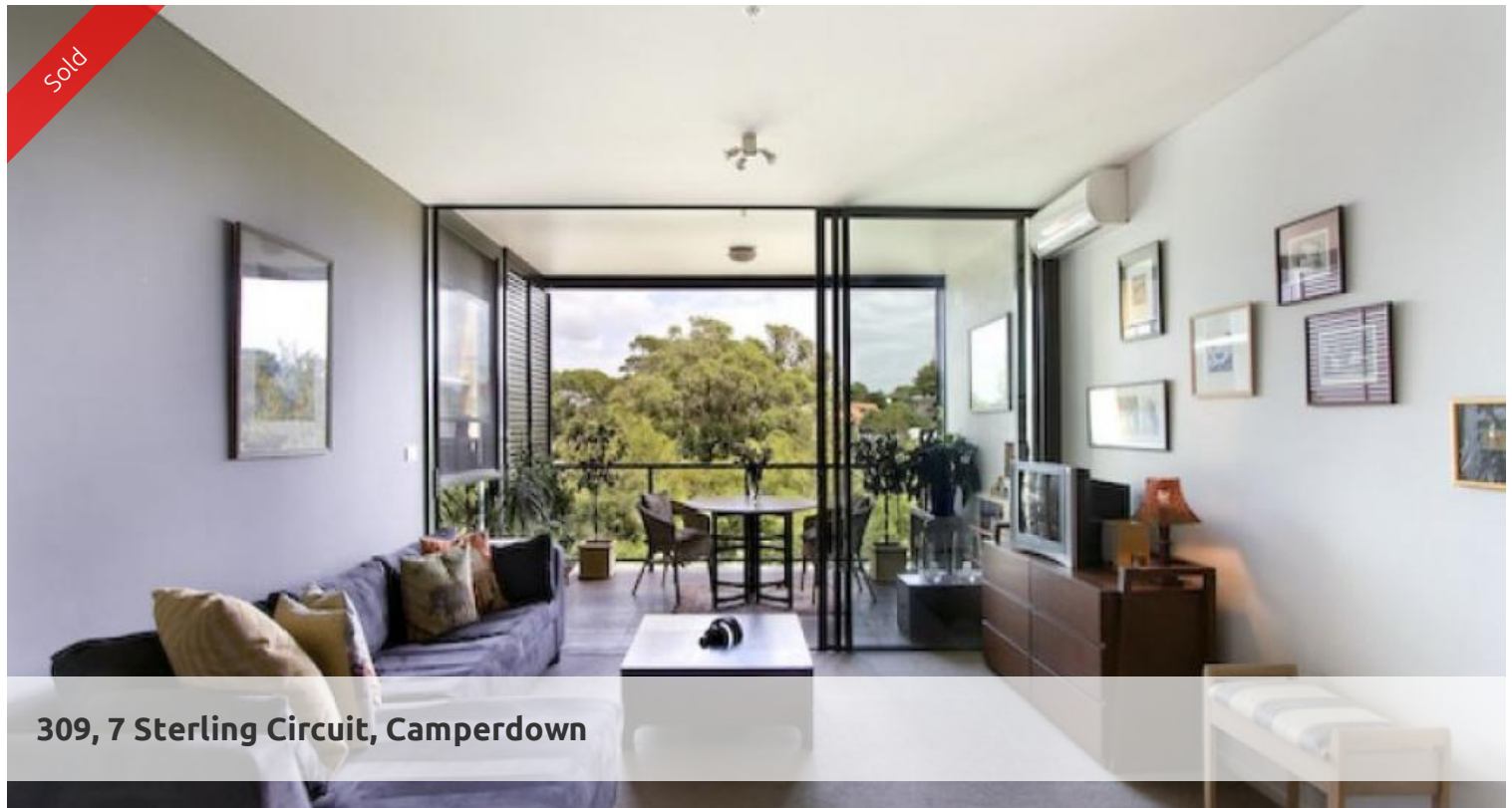
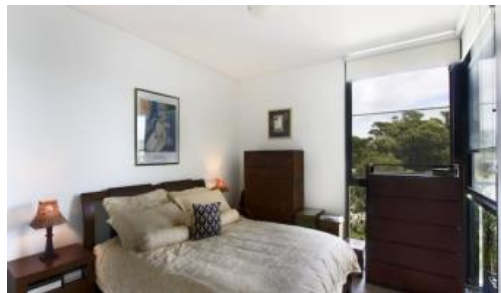


Sold



309, 7 Sterling Circuit, Camperdown



SOLD BY CITY QUARTER AGENCY, CALL VICTOR MORRY MAIA ON 0407 330 033

Modern and spacious apartment in the highly sought after "Altro" building.

Features include;

- Spacious open plan living/dining
- Fully enclosable loggia with leafy outlook
- Gourmet Smeg kitchen with marble bench tops
- Fully fitted bathroom with separate bath/shower
- Large bedroom with built-ins
- Pool and gym facilities available in complex
- 24/7 security on-site

City Quarter is located between the eclectic villages of Glebe and Annandale, CBD, close to Broadway Shopping Centre, Royal Prince Alfred Hospital and city's university precinct.

The above information provided has been furnished to us by the vendor/s. We have not verified whether or not that information is accurate and do not have any belief in one way or the other in its accuracy. We do not accept any responsibility to any person for its accuracy and do no more than pass it on. All interested parties should make and rely upon their own inquiries in order to determine whether or not this information is in fact accurate.

🛏 1 🚿 1 🏠

| | |
|----------------------|-------------|
| Price | SOLD |
| Property Type | Residential |
| Property ID | 1627 |
| Land Area | 0 m2 |

Agent Details

William Chen - 0430 026 436
william@greenciff.com.au

Office Details

Greenciff Sydney Kent St
Level 10/488 Kent Street Sydney NSW
2000 Australia
02 8823 8818

greenciff
Inner city specialists