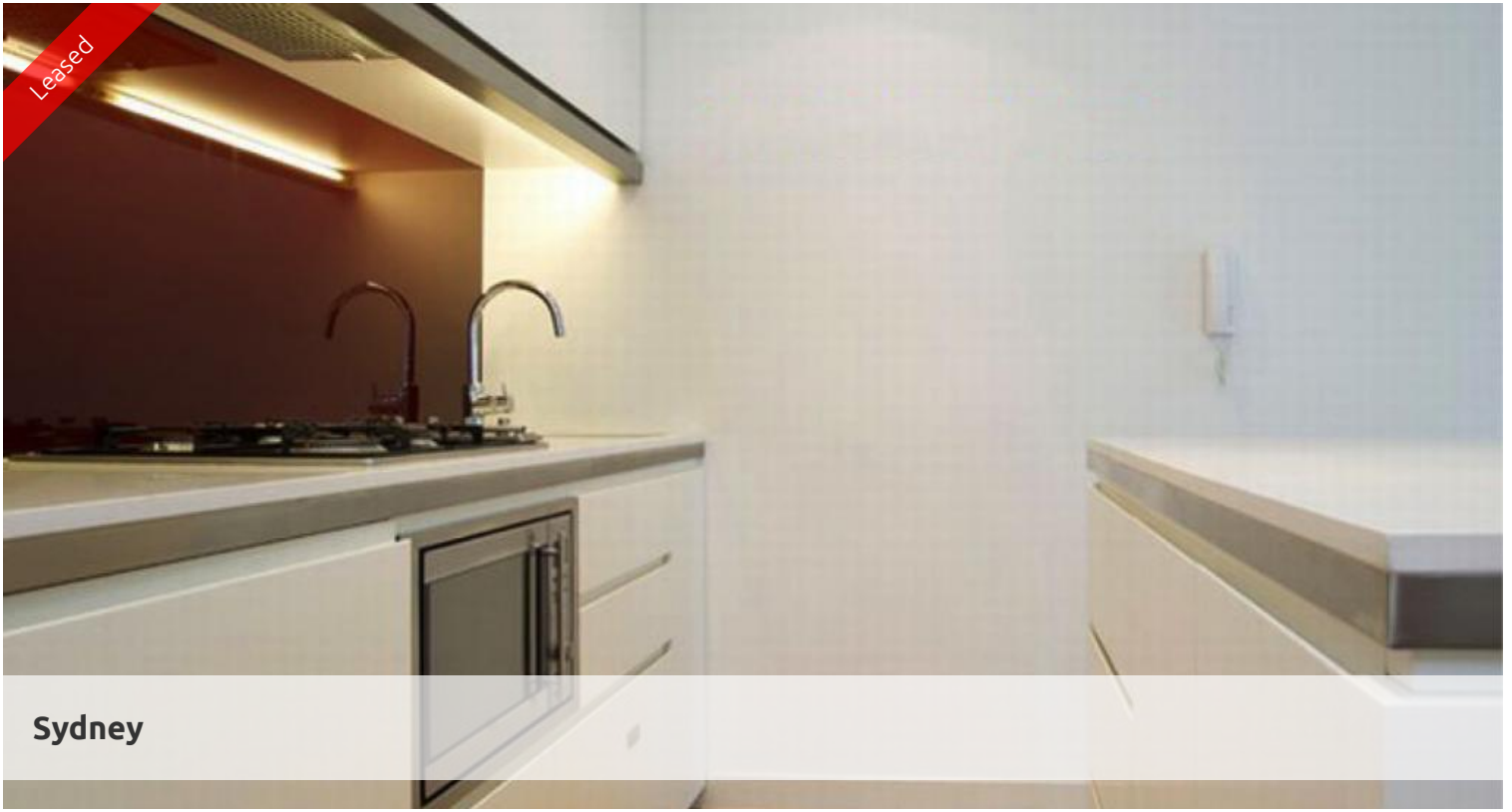


Leased



Sydney



1 BED WITH SECURE CAR SPACE SYDNEY CBD

One bedroom apartment located on level 33.

Featuring modern kitchen & bathroom facilities, fully enclosed separate study area, internal laundry, access to Club Lumiere and building facilities

- 24-hour concierge reception
- 56 level residential tower
- Colour audiovisual intercom
- Dedicated internal laundry space
- Dramatic three-storey glass atrium lobby
- First class spacious & well equipped gym
- Five high-speed 'intelligent' elevators
- Full height doors & tinted windows
- Fulltime monitored security surveillance cameras
- Fully ducted climate-controlled air-conditioning
- Picturesque 20-metre indoor recreational pool
- Spectacular indoor/outdoor 50-metre pool
- Residents access to Club Lumiere & Cinema
- Sophisticated resort-style leisure & fitness centre
- Stunning views of CBD & beyond

Please note: images included here may be indicative only

🛏 1 🚿 1 🚗 1

Price

L33/101 Bathurst St | \$830
PW

Property Type

Rental

Property ID 157

Land Area 0 m²

Agent Details

Lieu Mai - 0415 797 525
lieu@greenciff.com.au

Office Details

Greenciff Sydney Kent St
Level 10/488 Kent Street Sydney NSW
2000 Australia
02 8823 8818

greenciff
Inner city specialists

The above information provided has been furnished to us by the vendor/s. We have not verified whether or not that information is accurate and do not have any belief in one way or the other in its accuracy. We do not accept any responsibility to any person for its accuracy and do no more than pass it on. All interested parties should make and rely upon their own inquiries in order to determine whether or not this information is in fact accurate.