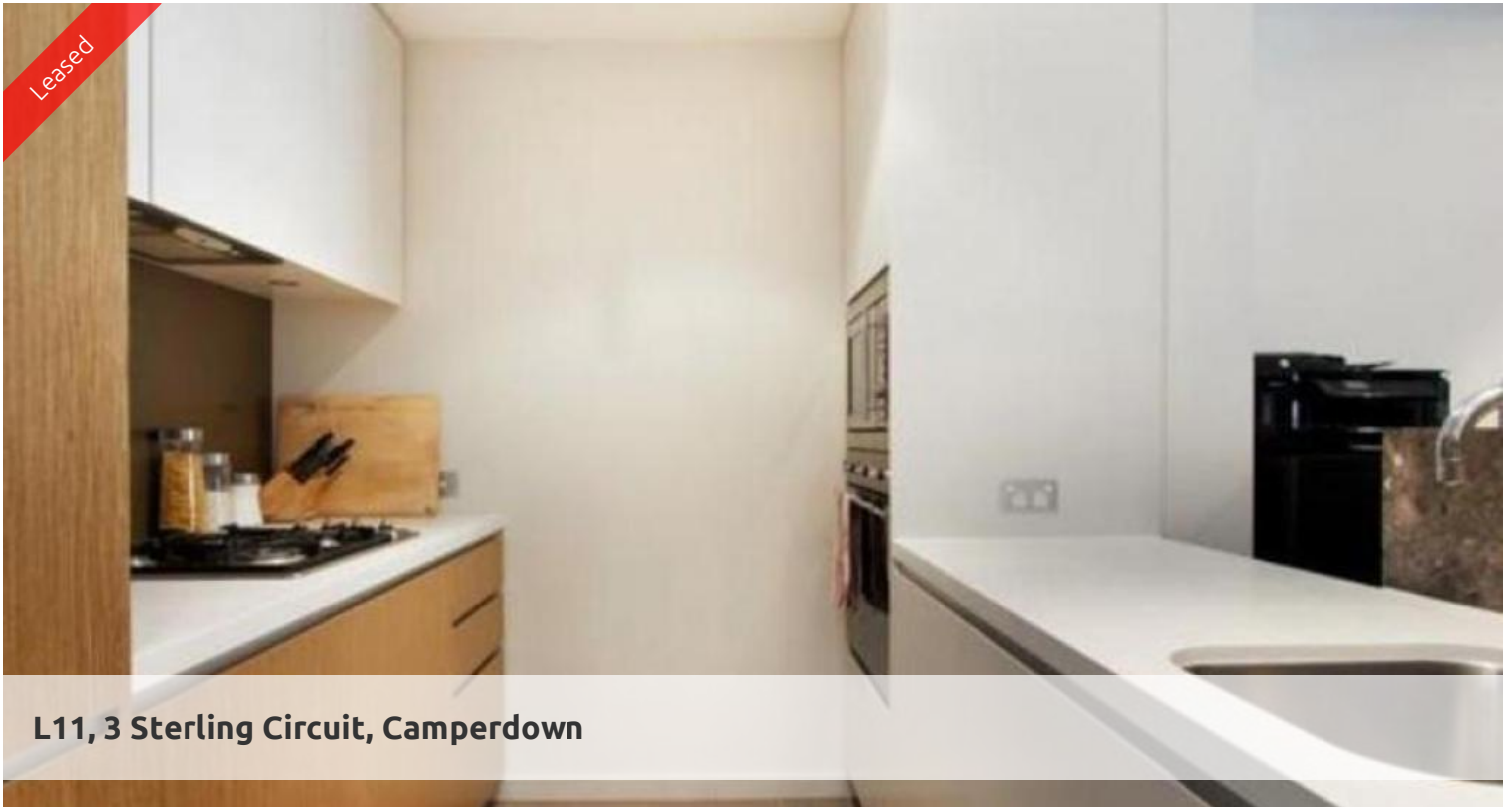


Leased



## L11, 3 Sterling Circuit, Camperdown



### "TRIO" EAST FACING FURNISHED TWO BEDROOM APARTMENT WITH TWO PARKING

Perfectly positioned on the eleventh floor of sought after "Trio Central" is this fabulous two bedroom apartment.

Boasting superb finishes throughout and extensive city views from every room this apartment oozes relaxation and ambience.

Features include:

- Gourmet kitchen with European gas appliances and dishwasher
- Open plan living flows to timber loggia, ideal for alfresco entertaining
- Two large bedrooms, both built-in wardrobes, direct loggia access
- Two sleek bathrooms, internal laundry, r/c air conditioning
- Security building with 2 car spaces, lift access and storage cage

Being in The City Quarter Complex you will be able to enjoy the free, unlimited access to your choice of a 50 metre outdoor or 25m indoor pool and two gymnasiums. The complex also has 24 hour security, a Japanese restaurant, cafe & convenience store. Only a 10 minute bus ride to the city or an easy stroll to Glebe, Broadway, Leichhardt and Newtown which are just around the corner.

For more information, please contact 02 8262 8262.

\*Please note photos used may be indicatives only\*

The above information provided has been furnished to us by the vendor/s. We have not verified whether or not that information is accurate and do not have any belief in one way or the other in its accuracy. We do not accept any responsibility to any person for its accuracy and do no more than pass it on. All interested parties should make and rely upon their own inquiries in order to determine whether or not this information is in fact accurate.

 2  2  2

<b>Price</b>	P.O.A.
<b>Property Type</b>	Rental
<b>Property ID</b>	1552

#### Agent Details

William Chen - 0430 026 436  
william@greenciff.com.au

#### Office Details

Greenciff Sydney Kent St  
Level 10/488 Kent Street Sydney NSW  
2000 Australia  
02 8823 8818

**greenciff**  
Inner city specialists