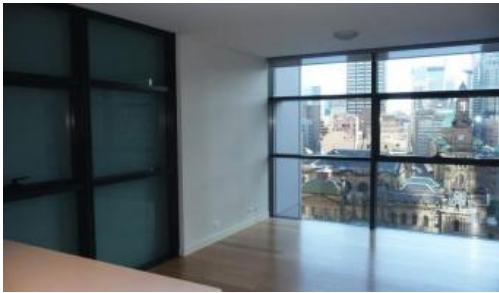


Leased



L25, 101 Bathurst Street, Sydney



LEASED.

Located in the heart of Sydney's iconic Town Hall precinct, Lumiere at Regent Place is a residential village in the sky.

The apartment features

- Timber flooring throughout
- Roughly 55sqm with built in robe
- Modern kitchen & bathroom facilities
- Internal laundry
- Ducted air conditioning
- Secure parking space
- Full access to Club Lumiere and building facilities

Facilities include access to spectacular indoor/outdoor 50 & 20 metre pool, sauna, spa, gym, function room & 2 cinemas.

For further information or to inspect, please call Jody Zhang 0404 586 699 or 8823 8818

*Photographs used may be indicative.

The above information provided has been furnished to us by the vendor/s. We have not verified whether or not that information is accurate and do not have any belief in one way or the other in its accuracy. We do not accept any responsibility to any person for its accuracy and do no more than pass it on. All interested parties should make and rely upon their own inquiries in order to determine whether or not this information is in fact accurate.

🛏 1 🚶 1 🚗 1

Price	P.O.A.
Property Type	Rental
Property ID	1515

Agent Details

William Chen - 0430 026 436
william@greenciff.com.au

Office Details

Greenciff Sydney Kent St
Level 10/488 Kent Street Sydney NSW
2000 Australia
02 8823 8818

greenciff
Inner city specialists