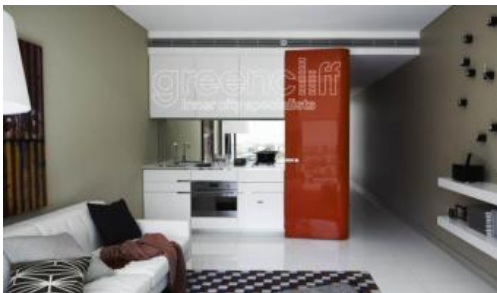


Leased



L6, 2 Chippendale Street, Chippendale



DEPOSIT RECEIVED! INSPECTION CANCELED!

Please meet at our office 5 Carlton Street, Chippendale a few minutes early to register and inspect.

UNFURNISH SUITE AVAILABLE IN CENTRAL PARK WEST!

Greenciff - Official On-Site Rental Management Team for Central Park!

One Central Park is inner city living at its best! Enjoy the convenience of shopping, entertainment, dining and transport right at your doorstep. Built around a beautiful park and draped in a living vertical garden, One Central Park is the perfect combination of luxury meeting nature.

Rich in amenities, this Frasers Property development features:

- Luxury apartments with stainless steel appliances
- Security building with 24 hour concierge
- Fitness centre with pool, gymnasium & spa
- 6 star green rated development
- 5 level shopping centre with Woolworths
- District view from apartment
- Fridge and washer/dryer included
- More than 30,000sqm of surrounding park and public space.
- Parking at additional \$50 per week

For more information please call Nana Huang on 0402 653 919 or on 02 9199 6555.

**Photos might be indicative

🛏 1 📶 1

Price	P.O.A.
Property Type	Rental
Property ID	1487

Agent Details

William Chen - 0430 026 436
william@greenciff.com.au

Office Details

Greenciff Sydney Kent St
Level 10/488 Kent Street Sydney NSW
2000 Australia
02 8823 8818

