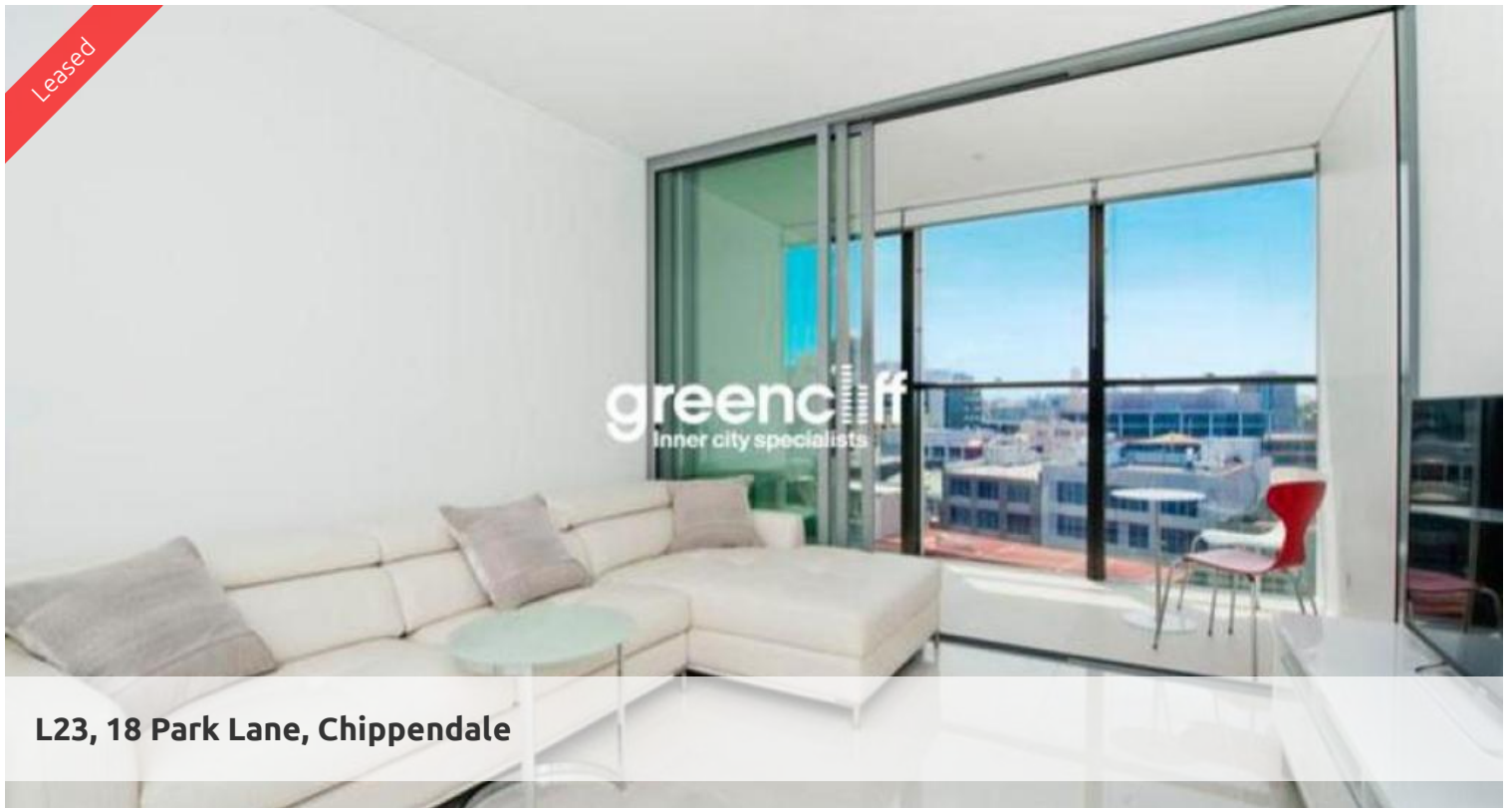
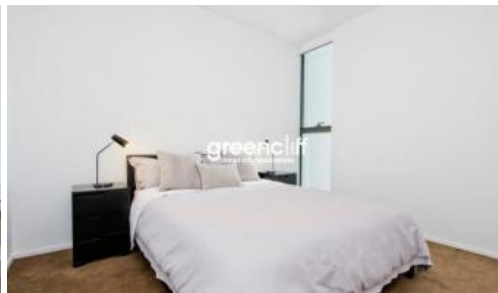


Leased



**L23, 18 Park Lane, Chippendale**



### Contact Agent

Please meet at our office 5 Carlton Street, Chippendale to inspect.

Dual Keyed One Bedroom apartment, utilities included with rent.

The Mark is the future of vibrant inner city living and a shining example of all that advanced technologies and bold imaginations can contribute to modern and sustainable living.

Located at Central Park Chippendale, The Mark has direct access to a fully equipped gymnasium, an elevated outdoor pool and on your doorstep is an expansive tree lined park named Chippendale Green. Fashionable retail outlets, a supermarket and various cafes and eateries available to your heart's content.

Moments to Central stations, buses and surrounding Universities makes living at Central Park the ultimate convenience.

The apartments boast intelligent and lifestyle-savvy interiors, features

- Ducted air conditioning
- Loggia for indoor/outdoor living
- Fridge and washer/dryer included
- European kitchen appliances/stone bench tops
- The latest bathroom fittings and design
- Selection of timber/tiled flooring to the living areas/carpeted bedrooms
- Intercom system

The Mark offers

The Deck - Situated on the rooftop with a spa lawn and terrace spaces to relax

🛏 1 🚿 1 🚗 1

**Price**

P.O.A.

**Property Type**

Rental

**Property ID**

1448

### Agent Details

William Chen - 0430 026 436

[william@greenciff.com.au](mailto:william@greenciff.com.au)

### Office Details

Greenciff Sydney Kent St

Level 10/488 Kent Street Sydney NSW

2000 Australia

02 8823 8818

**greenciff**  
Inner city specialists