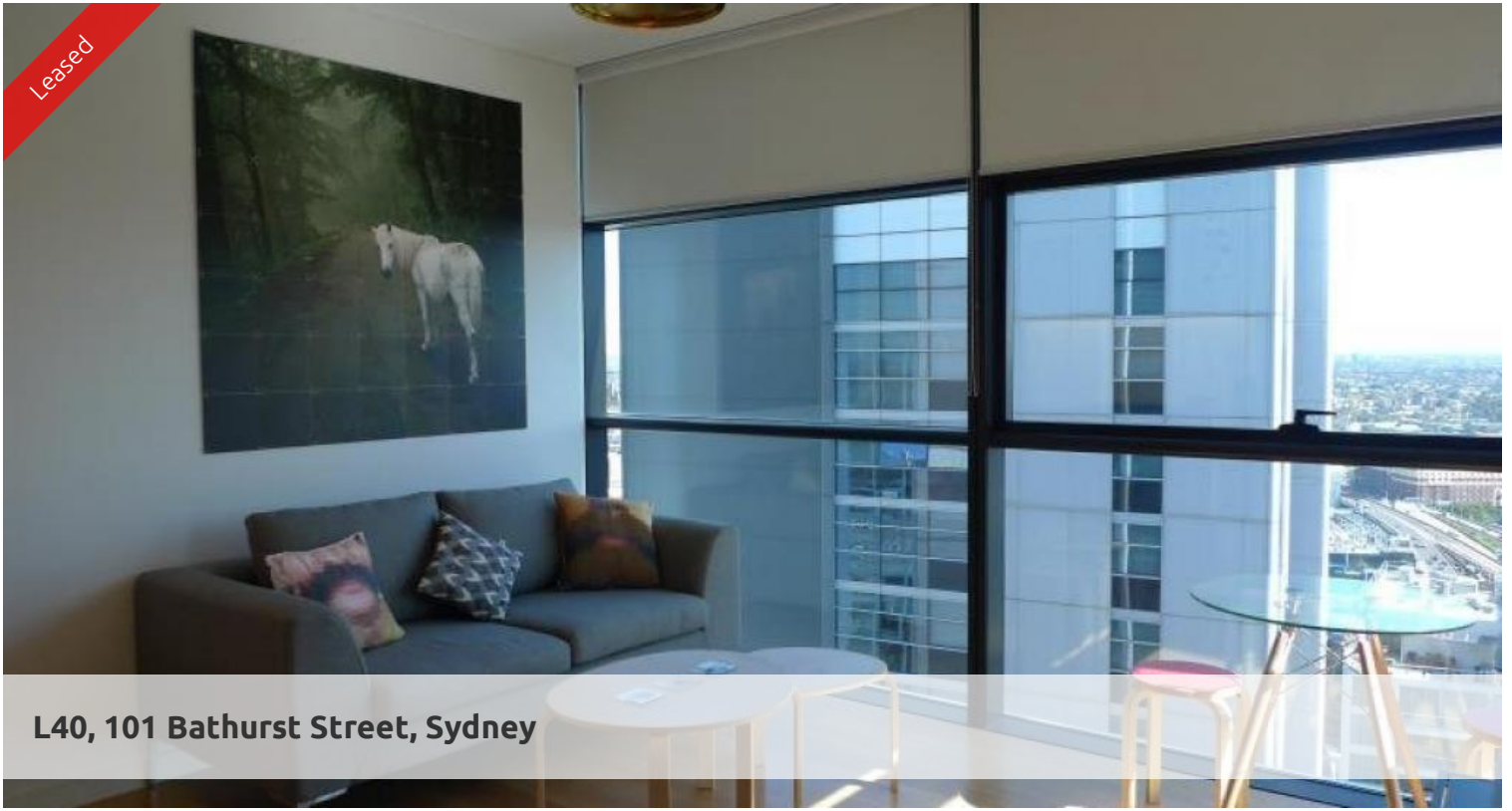
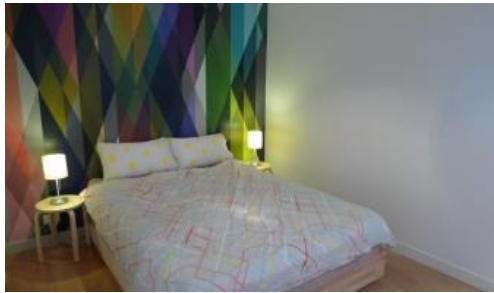


Leased



**L40, 101 Bathurst Street, Sydney**



## DEPOSIT TAKEN - CONTACT AGENT

Situated on level 40 of the Lumiere Residence.

The executive suite features

- Furnished
- Timber flooring through out
- Roughly 42sqm with built in robe
- Modern kitchen & bathroom facilities
- Internal laundry
- Ducted air conditioning
- Full access to Club Lumiere and building facilities
- Car space additional \$60 per week

Facilities include access to spectacular indoor/outdoor 50 & 20 metre pool, sauna, spa, gym, function room & 2 cinemas.

For further information or to inspect, please call Shalini Vashistha 0421 640 010 or 8823 8818

\*Photographs used may be indicative.

The above information provided has been furnished to us by the vendor/s. We have not verified whether or not that information is accurate and do not have any belief in one way or the other in its accuracy. We do not accept any responsibility to any person for its accuracy and do no more than pass it on. All interested parties should make and rely upon their own inquiries in order to determine whether or not this information is in fact accurate.

🛏 1 🚿 1

**Price**

P.O.A.

**Property Type**

Rental

**Property ID**

1358

### Agent Details

William Chen - 0430 026 436

[william@greenciff.com.au](mailto:william@greenciff.com.au)

### Office Details

Greenciff Sydney Kent St

Level 10/488 Kent Street Sydney NSW

2000 Australia

02 8823 8818

**greenciff**  
Inner city specialists