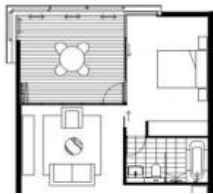


Leased



704, 3 Sterling Circuit, Camperdown



EAST FACING ONE BEDROOM + STUDY APARTMENT

Sunny and spacious East-facing large one bedroom apartment with spectacular city views located on the seventh floor of the Central building of sought after "Trio".

Features include:

- Open plan gas kitchen with Smeg stainless steel appliances
- Spacious living area superbly flowing to generous loggia
- Separate study nook, internal laundry facilities
- Sleek bathroom with separate bath and shower
- Spacious bedroom with built-in robes and lovely outlook
- Superb finishes throughout, reverse cycle air conditioning
- Natural flow of indoor/outdoor living, ideal for alfresco entertaining
- Generous loggia with expansive city views
- Security building with car space and storage cage

Being in The City Quarter Complex you will be able to enjoy the free, unlimited access to your choice of a 50m outdoor or 25m indoor pool and two gymnasiums. The complex also has 24hr security, a Japanese restaurant, cafes & convenience store.

Only a 10 minute bus ride to the city or an easy stroll to Glebe, Broadway, Leichhardt and Newtown which are just around the corner.

The above information provided has been furnished to us by the vendor/s. We have not verified whether or not that information is accurate and do not have any belief in one way or the other in its accuracy. We do not accept any responsibility to any person for its accuracy and do no more than pass it on. All interested parties should make and rely upon their own inquiries in order to determine whether or not this information is in fact accurate.

🛏 1 🌐 1 🚗 1

Price	\$695 p/w
Property Type	Rental
Property ID	1291

Agent Details

William Chen - 0430 026 436
william@greenciff.com.au

Office Details

Greenciff Sydney Kent St
Level 10/488 Kent Street Sydney NSW
2000 Australia
02 8823 8818

greenciff
Inner city specialists