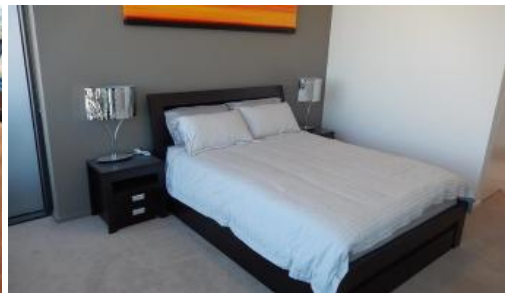




**L28, 3 Carlton Street, Chippendale**



**\*\*\*Deposit Received\*\*\*** Finished one bedroom dual keyed apartment at CENTRAL PARK with water view to the Botany Bay.

Finished one bedroom dual keyed apartment available for lease at CENTRAL PARK with water view to the Botany Bay.

One Central Park is inner city living at its best! Enjoy the convenience of shopping, entertainment, dining and transport right at your doorstep. Built around a beautiful park and draped in a living vertical garden, One Central Park is the perfect combination of luxury meeting nature.

Rich in amenities, this Frasers Property development features:

- Luxury apartments with stainless steel appliances
- Security building with 24 hour concierge
- Fitness centre with pool, gymnasium & spa
- 6 star green rated development
- 5 level shopping centre with Woolworths
- Basement storage cage
- More than 30,000sqm of surrounding park and public space.
- Note rent is inclusive of water usage, electricity & gas

For further information or to inspect, please call Abby Sedillo 0425 829 934

1 1 1

|                      |           |
|----------------------|-----------|
| <b>Price</b>         | \$852 p/w |
| <b>Property Type</b> | Rental    |
| <b>Property ID</b>   | 1132      |

#### Agent Details

William Chen - 0430 026 436  
william@greenciff.com.au

#### Office Details

Greenciff Sydney Kent St  
Level 10/488 Kent Street Sydney NSW  
2000 Australia  
02 8823 8818

**greenciff**  
Inner city specialists

The above information provided has been furnished to us by the vendor/s. We have not verified whether or not that information is accurate and do not have any belief in one way or the other in its accuracy. We do not accept any responsibility to any person for its accuracy and do no more than pass it on. All interested parties should make and rely upon their own inquiries in order to determine whether or not this information is in fact accurate.