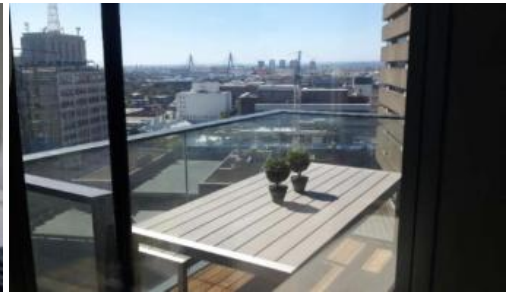
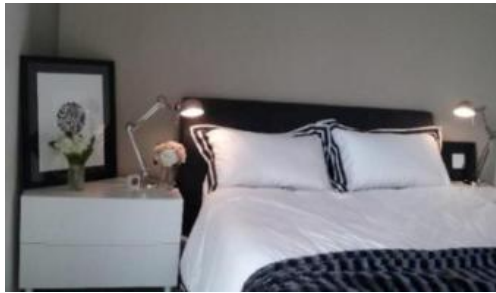


Leased



L12, 3 Carlton Street, Chippendale



INSPECTION: SATURDAY 5TH NOVEMBER 2016 AT 12:15PM

Please meet at our office 5 Carlton street, Chippendale a few minutes before to register and inspect

Furnished one bedroom apartment with one car space available at Central Park.

One Central Park is inner city living at its best!

Enjoy the convenience of shopping, entertainment, dining and transport right at your doorstep. Built around a beautiful park and draped in a living vertical garden, One Central Park is the perfect combination of luxury meeting nature.

Rich in amenities, this Central Park Property development features:

- New luxury apartments with stainless steel appliances
- Security building with 24 hour concierge
- Fitness centre with pool, gymnasium & spa
- 6 star green rated development
- 5 level shopping centre with Woolworths
- City, district or park views from all apartments
- Fridge and washer/dryer included
- More than 30,000sqm of surrounding park and public space.
- Electricity, gas, water, internet and foxtel included with rent

🛏 1 📶 1 🚗 1

Price

P.O.A.

Property Type

Rental

Property ID

1130

Agent Details

William Chen - 0430 026 436

william@greenciff.com.au

Office Details

Greenciff Sydney Kent St

Level 10/488 Kent Street Sydney NSW

2000 Australia

02 8823 8818

greenciff
Inner city specialists

For further information or to inspect, please call Nathan Sitou on 0466 110 429 or 9199 6556