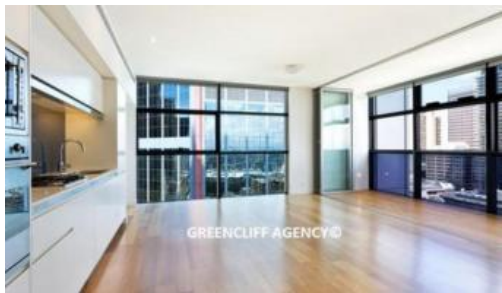


Leased



GREENCLIFF AGENCY ©

L37, 101 Bathurst Street, Sydney



GREENCLIFF AGENCY ©



GREENCLIFF AGENCY ©



GREENCLIFF AGENCY ©

DEPOSIT TAKEN

Beautifully represented 1 bedroom plus large study apartment available on level 37 in sought after Lumiere Residences.

Spanning over approximately 80sqm this apartment features hardwood timber floors throughout with carpet in the bedroom, state of the art modern kitchen with Miele appliances, grand bathroom with heated floors and towel rails, floor to ceiling glass windows, electric blinds, internal laundry with dryer & large full sized study room and unlimited access to Club Lumiere facilities.

Soaring 56 levels, Lumiere Residences, features a collection of light-filled and spacious homes that embrace the historic surrounds. A living innovation in every sense, Lumiere at Regent Place is set to transform this prestigious mid-town precinct of Sydney into a vibrant living quarter.

For more information, please contact Abby Sedillo on 0432 829 934

The above information provided has been furnished to us by the vendor/s. We have not verified whether or not that information is accurate and do not have any belief in one way or the other in its accuracy. We do not accept any responsibility to any person for its accuracy and do no more than pass it on. All interested parties should make and rely upon their own inquiries in order to determine whether or not this information is in fact accurate.

 1  1  1

Price	\$800 p/w
Property Type	Rental
Property ID	1071

Agent Details

William Chen - 0430 026 436
william@greenclyff.com.au

Office Details

Greenclyff Sydney Kent St
Level 10/488 Kent Street Sydney NSW
2000 Australia
02 8823 8818

greenclyff
Inner city specialists