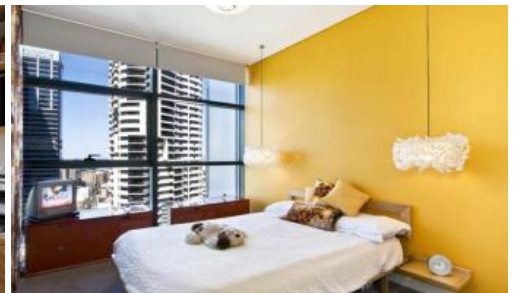


Leased



L34, 101 Bathurst Street, Sydney



DEPOSIT TAKEN

This sought after furnished one bedroom apartment is on the south east corner of Lumiere Residences. Furnished by the renowned interior design team at Spence and Lyda this fantastic, flexible apartment can be a full time family home or a city pad for the busy executive!

Comprising of 65sqm (approx) of internal living space this apartment features timber floors throughout with carpet in the bedroom, state of the art modern kitchen facilities with dishwasher, grand bathroom, floor to ceiling glass windows, one security car space and unlimited access to Club Lumiere facilities.

Soaring 56 levels, Lumiere Residences, features a collection of light-filled and spacious homes that embrace the historic surrounds. A living innovation in every sense, Lumiere at Regent Place is set to transform this prestigious mid-town precinct of Sydney into a vibrant living quarter.

For further information or to inspect, please call Abby Sedillio 0432 829 934

The above information provided has been furnished to us by the vendor/s. We have not verified whether or not that information is accurate and do not have any belief in one way or the other in its accuracy. We do not accept any responsibility to any person for its accuracy and do no more than pass it on. All interested parties should make and rely upon their own inquiries in order to determine whether or not this information is in fact accurate.

🛏 1 🚿 1 🚗 1

Price	\$900 p/w
Property Type	Rental
Property ID	1049

Agent Details

William Chen - 0430 026 436
william@greenciff.com.au

Office Details

Greenciff Sydney Kent St
Level 10/488 Kent Street Sydney NSW
2000 Australia
02 8823 8818

greenciff
Inner city specialists