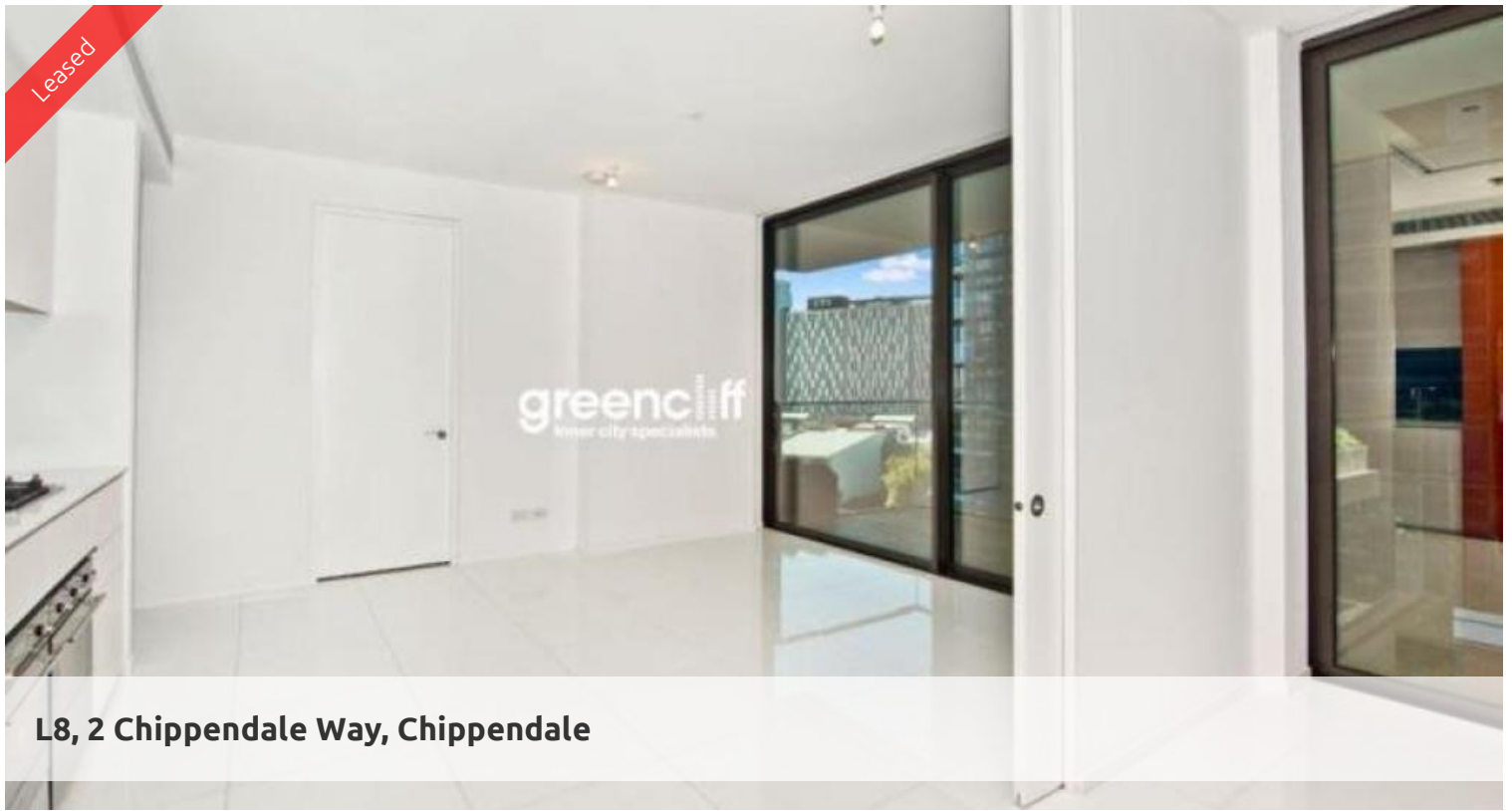


Leased



L8, 2 Chippendale Way, Chippendale



*** DEPOSIT TAKEN ***

Unfurnished two bedroom apartment in West Tower for lease!!

Greenciff - Official On-Site Rental Management Team for Central Park!

One Central Park is inner city living at its best! Enjoy the convenience of shopping, entertainment, dining and transport right at your doorstep. Built around a beautiful park and draped in a living vertical garden, One Central Park is the perfect combination of luxury meeting nature.

Rich in amenities, this Frasers Property development features:

- New luxury apartments with stainless steel appliances
- Security building with 24 hour concierge
- Fitness centre with pool, gymnasium & spa
- 6 star green rated development
- 5 level shopping centre with Woolworths
- City, district or park views from all apartments
- A storage cage in the basement
- Fridge and washer/dryer included
- More than 30,000sqm of surrounding park and public spaces

For more information please call Claire Yu on 0434 001 870 or 02 9199 6555.

Photos might be indicative

The above information provided has been furnished to us by the vendor/s. We have not verified whether or not that information is accurate and do not have any belief in one way or the other in its accuracy. We do not accept any responsibility to any person for its accuracy and do no more than pass it on. All interested parties should make and rely upon their own inquiries in order to determine whether or not this information is in fact accurate.

🛏 2 🗺 1 🚗 1

Price	\$820 p/w
Property Type	Rental
Property ID	1018

Agent Details

William Chen - 0430 026 436
william@greenciff.com.au

Office Details

Greenciff Sydney Kent St
Level 10/488 Kent Street Sydney NSW
2000 Australia
02 8823 8818

greenciff
Inner city specialists